



Place Plan for Church Stretton and surrounding area

2014/2015

CONTENTS

1. INTRODUCTION	2
1.1 What is this document?	2
1.2 What are Place Plans?	2
1.3 How are the Place Plans used?	3
1.4 How are the Place Plans structured?	3
1.5 Place Plan links to planning and locality commissioning	4
2. COMMUNITY LED PLANNING IN CHURCH STRETTON AREA....	5
2.1 Church Stretton Place Plan Area.....	5
2.2 Summary of community priorities within Church Stretton Town	5
2.3 Summary of community priorities within the surrounding area	7
3. DEVELOPMENT AND ASSOCIATED INFRASTRUCTURE REQUIREMENTS	10
3.1 Vision to guide development in the Church Stretton Place Plan Area	10
3.2 Associated Infrastructure Requirements.....	11
Church Stretton Town - Development related infrastructure requirements	12
Rural Hinterland - Development related infrastructure requirements	17
4. WIDER INVESTMENT PRIORITIES IN CHURCH STRETTON PLACE PLAN AREA	28
Church Stretton Town – Wider investment priorities	28
Rural Hinterland – Wider investment priorities	37
APPENDIX A: COMMUNITY ENGAGEMENT AND CONSULTATION FOR CHURCH STRETTON PLACE PLAN AREA	46
Community Led Plans	46
Local Joint Committee.....	49
Other Community Consultations	49
APPENDIX B: CHURCH STRETTON MARKET TOWN PROFILE	54
Context Map 1:.....	54
Context Map 2: Statistical Geographies	55
Social & Demographic Characteristics	56
Business	56
Deprivation	58
Housing and Households	59
Development Trends.....	59
Transport & Infrastructure	59
Natural and Historic Environment	60
Further information about Church Stretton available online:	60

- 1.2.2 There are 18 Place Plans in Shropshire. Each Place Plan is based around one of Shropshire's 18 main towns and its wider hinterland, which comprises Community Hubs, Community Clusters and rural parishes within the surrounding countryside (Rural Hinterland).
- 1.2.3 The Place Plans are 'live' documents that are informed by an 'annual conversation' with Town and Parish Councils, infrastructure and service providers. As such, the Place Plans provide an up to date record of infrastructure and investment needs within an area and those priorities which should assist in providing a focus for delivery in the year ahead.

1.3 How are the Place Plans used?

- 1.3.1 The Place Plans provide an important evidence base to:
- **Support delivery of Shropshire's Local Plan-** *ensuring new development is supported by the necessary infrastructure, including identifying requirements for development contributions.*
 - **Assist in informing planning decisions-** *forming a material consideration for planning applications.*
 - **Coordinate actions and inform difficult decisions-** *where future resources should be targeted, by Shropshire Council and partner organisations.*
 - **Inform local partnership working –** *ensuring an agreed set of local priorities.*
 - **Assist with external funding bids-** *providing evidence of local investment needs and priorities*
 - **Provide transparency to local communities-** *identifying where local investment is being targeted.*

1.4 How are the Place Plans structured?

- 1.4.1 Each Place Plan consist of five key sections, these are:

1. Introduction

The role of Place Plans and the communities covered within the Development Priorities.

2. Community led planning within the Place Plan area

Summary of the community vision and priorities within the Place Plan area identified through community led plans and wider consultation work with the local community.

3. Development and associated infrastructure requirements

Summary of the development plan for the area, as identified in Shropshire's Local Plan and the associated infrastructure needs and priorities required to ensure this growth is sustainable, including a plan of how these may be delivered.

4. Wider investment priorities within the Place Plan area

Summary of the identified investment needs and priorities required to support the wider sustainability of communities within the Place Plan area.

5. Place Plan Profile

Summary of key data for the Place Plan area, to provide background context to the locality and assist in informing future decision making on infrastructure and investment priorities. This is provided in Appendix B.

1.5 Place Plan links to planning and locality commissioning

Planning

- 1.5.1 The Place Plans form part of Shropshire's Local Plan, outlining the infrastructure requirements which are needed to support the level and location of development, as outlined in Shropshire's adopted Core Strategy and the Site Allocations and Management of Development (SAMDev) Plan.
- 1.5.2 As Shropshire's Local Plan seeks to link new development to the provision of local community benefits, many of the policies within the Core Strategy and SAMDev Plan refer to the need to consider the local aspirations set out within the Place Plans. As such, the Place Plans are an important material consideration for planning applications.
- 1.5.3 In addition, the Place Plans provide the framework for the targeted use of developer contributions, including design, S106 and CIL. In particular, the infrastructure priorities identified within the Place Plans inform the content of the CIL Regulation 123 List, which sets out those infrastructure needs which will be delivered through the use of CIL.

Please Note: The CIL Regulation 123 List is updated annually, and infrastructure not included within this list, can still benefit from CIL funds in the future.

Locality Commissioning

- 1.5.4 Shropshire Council is committed to locality commissioning whereby there is a strong focus on working with local communities to find out what is important to them and ensuring local services are targeted appropriately. The Place Plans are central to Shropshire's locality commissioning approach, as they provide the local evidence base of investment needs and priorities.

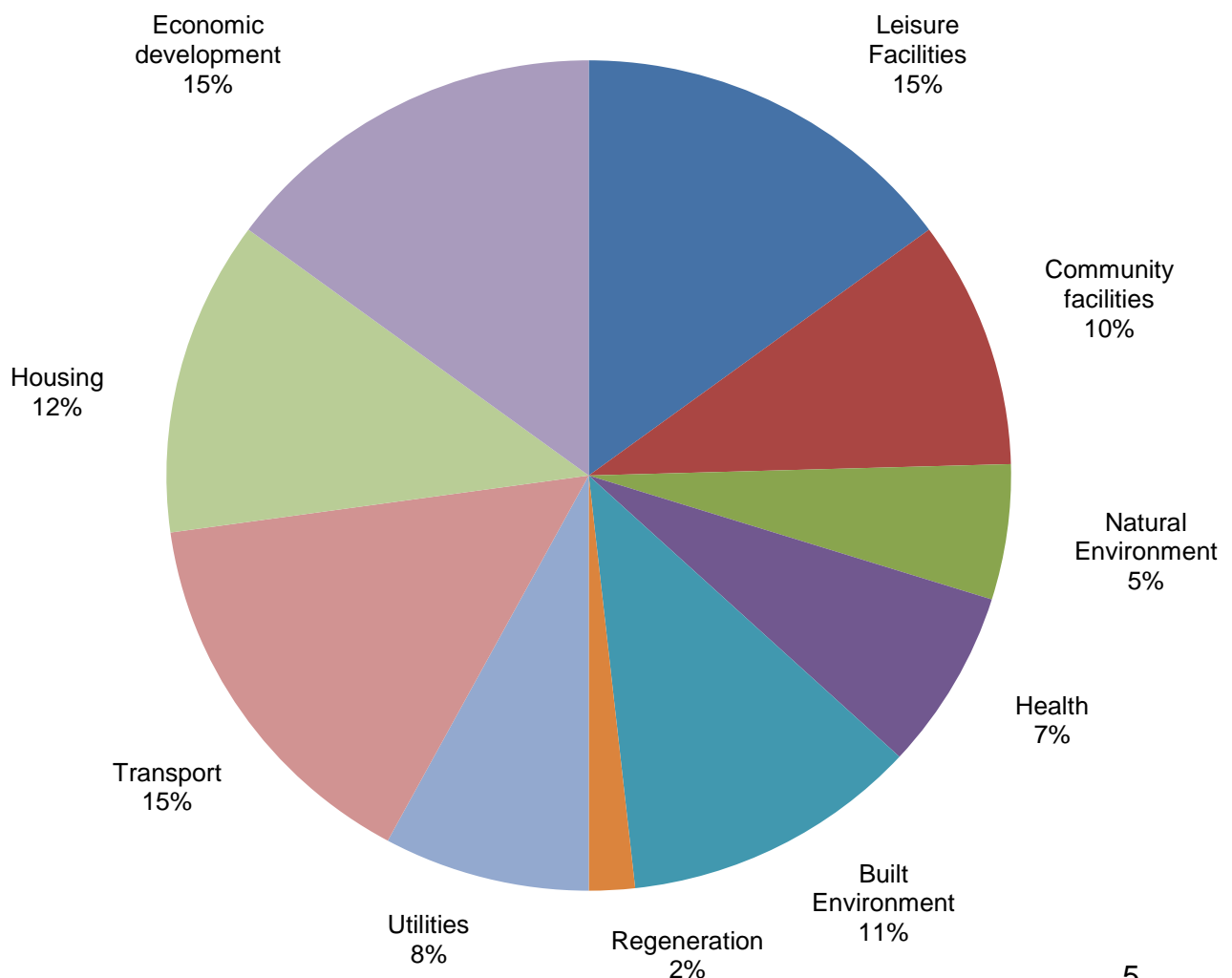
2. COMMUNITY LED PLANNING IN CHURCH STRETTON AREA

2.1 Church Stretton Place Plan Area

- 2.1.1 A number of community led plans have been developed for local communities within the Church Stretton Place Plan area. These provide a key source of information when considering infrastructure and investment needs within an area and as such are an important basis for the Place Plans.
- 2.1.2 Appendix A provides detailed information on the community's needs and priorities identified through the various community led plans; Local Joint Committees; and other community consultations that have occurred within the Place Plan area.
- 2.1.3 However, to provide a broad understanding of the areas of interest, the below overview summarises those community priorities and key areas of interest set out in detail in Appendix A. This summary has been split between:
- Church Stretton Town; and
 - Surrounding Area (including Hubs, Clusters and rural parishes).

2.2 Summary of community priorities within Church Stretton Town

Summary of community priorities - by type, identified through community consultation in Church Stretton (as identified in Appendix A).



2.2.1 The above summary can be broken down into the following key headlines:

Transport

- Public transport provision- including provision of bus shelters and real time indicator boards and proper coach drop off facilities.
- Improve parking arrangements.
- Improve public transport to decrease car usage.
- Improve verge maintenance.

Community Crime and Safety

- Work with crime reduction partnership and police to tackle crime and anti-social behaviour.

Children and Young People

- Increased activities available for young people e.g. youth groups, clubs, improve park's facilities- BMX track, skate park and other possible initiatives eg graffiti wall.
- Support local schools.

Education

- More skills, training and employment options for all residents, especially young people.
- Develop links between school and local employers.

Culture, Sport and Leisure

- Upgrading of the playing fields, with a new Pavilion, together with appropriate parking capacity.
- Maximize the sense of community ownership of the new Community Leisure Centre. Improved spectator facilities for sporting events and competitions and all weather surface.

Environment

- Retain the attractive pedestrian town centre, street cleanliness and local character.
- Conserve rural environment and local wildlife alongside reducing carbon footprint and increasing climate care.
- Carbon reduction and energy efficiency measures in homes.

Economy and Tourism

- Sustainable tourism, a year round programme of visitor attractions and courses.
- Promote and local business opportunity and enterprise, including the promotion of home working.
- Support local businesses.
- Develop outdoor activities.
- Encourage recruitment, training and retention of local people to local businesses.
- Facilitate business networking.

Heritage

- Establishment of museum / heritage centre.
- Retain character of the town working with design guide and design statement guidance.

Health and well-being

- Health promotion activities to discourage alcohol and drug/substance misuse.
- Matching resources to demands for the Medical Centre and health and social care systems.
- Facilities and support e.g. outdoor activities for residents including specifically tailored activities for the elderly and disabled residents.
- Provision of health and wellbeing centre.
- Support medical centre and Mayfair.

Communication

- Faster broadband services and the expansion of other e-communication networks.

Development

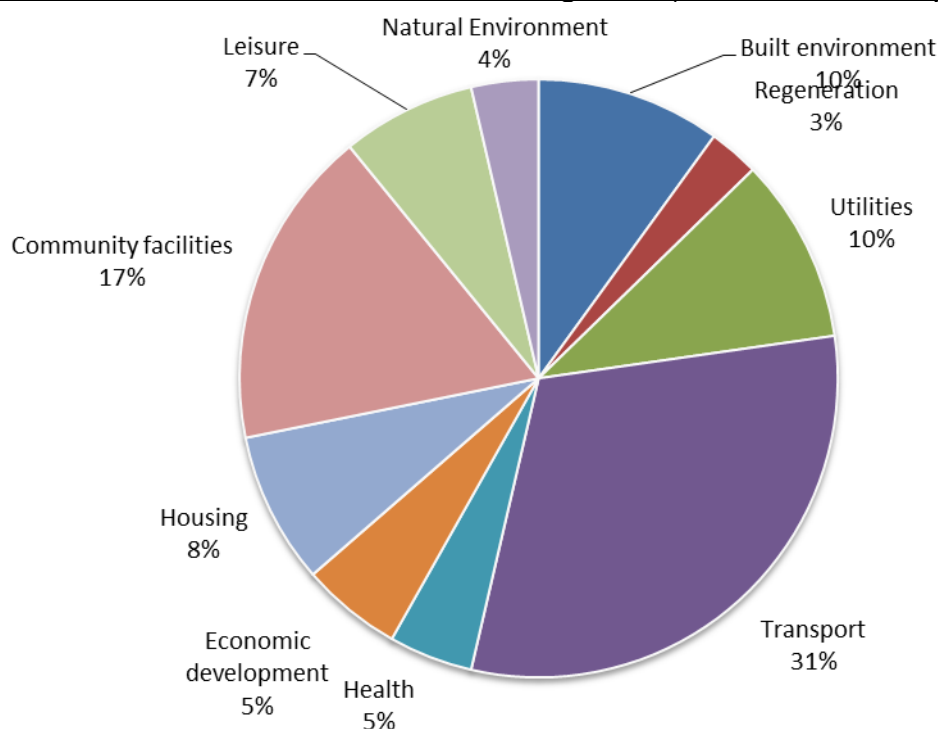
- Affordable housing for local people.

Communication

- Utilities, improvements to the drainage, sewage system, continuity of electric supply and mains water supply.
- Better disabled access to shops and increased public conveniences.
- Infrastructure requirements.

2.3 Summary of community priorities within the surrounding area

Summary of community priorities - by type, identified through community consultation in Church Stretton surrounding area (as identified in Appendix A).



2.3.1 The above summary can be broken down into the following key headlines:

Children and Young People

- Play area provision.

Education

- Retain local schools.

Community Crime and Safety

- Speed enforcement carried out.
- Better engagement with local police.
- Promote crime reduction measures.
- Decrease noise related anti-social behaviours.
- Improve engagement with local police.
- Encourage residents to sign up to neighbourhood watch updates by email
- Parish Council to promote crime reduction messages through parish magazines.

Culture, Sport and Leisure

- Improve condition of village halls.
- Provide more social opportunities.
- Support campaign to improve broadband speed
- Consider provision of a play area
- Increase number of mobile library stops
- Development of a pub
- Promote mobile library service
- Enhance and support existing provision of events and activities in local community buildings

Environment

- Decrease litter.
- Improve local footpaths and bridleways.
- Decrease carbon footprint.
- No large scale renewable energy schemes.
- Improve verge maintenance.
- Support campaign to improve broadband speed
- Consider provision of a play area
- Increase number of mobile library stops
- Development of a pub
- Aim to reduce carbon footprint of the parish

Health and Well-being

- Local health service provision.
- Increase social opportunities.
- Footpath and cycle path installations for safety
- Better promotion locally of services and support regarding health and older people
- Encourage responsible behaviour from dog owners re fouling and barking
- Mobile health clinics

Communication

- Improved broadband speeds.
- Improve communication through; continuing parish magazine, up to date website with better contact facilities.

Development

- Ascertain accurate local housing need.
- Housing needs assessment needed to ascertain housing need
- Undertake a housing needs survey to identify true extend of need for local affordable housing

Economy and Tourism

- Develop directory of local services.
- Encourage local food and product purchasing.
- Encourage mobile shop provision.

Infrastructure

- Infrastructure needs in line with developments.

Transport

- Improve local transport and support voluntary schemes.
- Issues with A49 and highways agency.
- Traffic calming measures and speed restrictions to be considered.
- Improvements to winter gritting.
- Parking restrictions in some settlements.
- Improve condition of roads and pavements.
- More speed restrictions
- Winter gritting improvements
- Parking restrictions in Acton Burnell
- Improve transport to Shrewsbury
- Improve information about local bus service
- Compulsory speed limit of 20mph in Frodesley
- Improved road clearance and gritting in the winter
- Decrease speed of traffic and encourage enforcement working with local police
- Improve condition of main roads and lanes

3. DEVELOPMENT AND ASSOCIATED INFRASTRUCTURE REQUIREMENTS

3.1 *Vision to guide development in the Church Stretton Place Plan Area*

- 3.1.1 Shropshire's Core Strategy (March 2011) sets out the strategic vision and objectives to guide development and growth for the period 2006-2026. This includes a vision for *Church Stretton (Policy CS3)* and the surrounding *Hubs, Clusters (Policy CS4)* and *Rural Hinterland (Policy CS5)*, as follows:

CHURCH STRETTON TOWN (Core Strategy Policy CS3)

Church Stretton will have development that balances environmental constraints with meeting local needs. Because Church Stretton is the only market town in the AONB the TC is mindful of the conservation and enjoyment of the historic environment including heritage assets, which are irreplaceable resources.

The TC will give great weight to conserving its landscape and scenic beauty within the highly protected environment of the AONB.

COMMUNITY HUBS (Core Strategy Policy CS4)

Community Hubs will have development that helps to rebalance rural communities by providing facilities, economic development or housing for local needs that is of a scale appropriate to the settlement.

COMMUNITY CLUSTERS (Core Strategy Policy CS4)

Community Clusters are comprised of two or more smaller settlements, where the combined settlements offer a range of services contributing to a sustainable community. Community Clusters will have development that helps to rebalance rural communities by providing facilities, economic development or housing for local needs that is of a scale appropriate to the settlement.

RURAL HINTERLAND (CORE STRATEGY POLICY CS5)

New development will be strictly controlled in accordance with national planning policies protecting the countryside and Green Belt. Subject to further controls over development that apply to the Green Belt, development proposals on appropriate sites which maintain and enhance countryside vitality and character will be permitted where they improve the sustainability of rural communities by bringing local economic and community benefits.

- 3.1.2 Within the Church Stretton Place Plan area, there are no Community Hub or Cluster settlements in the Church Stretton area. All remaining settlements within the Place Plan area form part of the Rural Hinterland.
- 3.1.3 Detailed proposals to deliver the strategic vision within the Core Strategy are contained within the Site Allocations and Management of Development (SAMDev) document which together with the Core Strategy forms Shropshire's Local Plan for 2006-2026. The SAMDev Plan sets out the following detailed development policies for the Church Stretton Place Plan area:

3.2 Associated Infrastructure Requirements

3.2.1 To ensure new development is sustainable, it is important that it is supported by the necessary infrastructure.

3.2.2 The below table details the infrastructure requirements which have been identified as needed to support the level and location of development for the Church Stretton Place Plan, as set out above. These infrastructure requirements have been identified through:

- Annual Place Plan ‘conversation’ with Town and Parish Councils and Shropshire Council elected Members
- Annual Place Plan ‘conversation’ with local infrastructure and service providers.
- Discussions with stakeholders regarding specific development sites

3.2.3 Whilst it is important that the Place Plan sets out all known infrastructure requirements, it is vital that these are prioritised in order to provide a focus for delivery. Core Strategy Policy CS9 (Infrastructure Contributions) provides the framework for prioritising infrastructure requirements, as follows:

- 1. Critical Infrastructure:** the essentials without which development cannot take place, such as utilities, water management and safe access.
- 2. Priority Infrastructure:** that which has been identified by the community as a particular priority at that point in time.
- 3. Key Infrastructure:** all other infrastructure not included in the previous two categories.

3.2.4 The below table also sets out the recommended mechanism for delivery, taking into account the roles and responsibilities of delivery partners and the regulations governing the use of different funding streams, including developer contributions.

3.2.5 However, whilst the Place Plan provide a framework for delivery, enabling the coordination of resources around an agreed set of priorities, it is important to recognise that not all the infrastructure items listed below may be deliverable at a particular point in time.

3.2.6 For infrastructure items to be delivered through the use of CIL funding (in full or part), it would usually be identified within the annual CIL Regulation 123 List.

Settlement	Housing guideline	Employment guideline	Allocations
Market Town			
Church Stretton	370 dwellings	1 hectare	<ul style="list-style-type: none"> • School Playing Fields (up to 50 dwellings) • Battlefield to rear of Oaks Road/Alison Road (50 dwellings) • Springbank Farm (1.27 ha of employment land)

Church Stretton Town – Development related infrastructure requirements

Infrastructure Requirement	Level of Priority	Delivery Partner(s)	Timing of Delivery	Potential Cost/ Funds Secured	Potential Funding		Notes
					Wider Sources	Developer Contributions	
CHURCH STRETTON TOWN							
HOUSING AND COHESIVE, SUSTAINABLE COMMUNITIES							
Affordable housing provision	PRIORITY	Shropshire Council, Homes and Communities Agency, Registered Providers	Ongoing	Scheme dependent	Homes and Communities Agency, Registered Providers	Section 106	Within Shropshire, it is the Council's aspiration that all developments contribute to a sustainable mix of dwelling types, sizes and tenures. This will be either through on-site provision or payment of a sum to be used for provision of affordable housing.
ECONOMIC INVESTMENT AND OPPORTUNITY							
Facilitation of ICT/broadband technologies	KEY	Shropshire Council, Private sector delivery partner, Town and Parish Councils		Initially £16.4 million. £8.2million secured from BDUK. £8.2 million secured from Shropshire Council.		CIL (Local)	The Connecting Shropshire aims to provide a minimum of 2 Mbps to all of Shropshire and as much superfast broadband as possible. The project will deliver to those communities that are not going to get either basic broadband or superfast broadband under the private sector rollout. This is a community priority for many towns, villages and rural areas of Shropshire.
SOCIAL AND COMMUNITY INFRASTRUCTURE							
Review of primary school places to ensure sufficient provision	PRIORITY	Shropshire Council	2016/17	£300,000	LA Capital programme	CIL (Local)	An updated assessment of the effect on primary school places locally has been made based on proposed levels of development with delivery spread evenly over the remaining Plan period. This currently indicates that consideration will need to be given to the provision of extra primary school places during this time span. Total requirement to 2026 based on current anticipated year-on-year housing yield, but dependent upon developers' actual timescales: 1no. classbase (academic year 2016/17)

Infrastructure Requirement	Level of Priority	Delivery Partner(s)	Timing of Delivery	Potential Cost/ Funds Secured	Potential Funding		Notes
					Wider Sources	Developer Contributions	
Review of secondary school places to ensure sufficient provision	PRIORITY	Shropshire Council	N/A	N/A	N/A	N/A	An updated assessment of the effect on secondary school places locally has been made based on proposed levels of development with delivery spread evenly over the remaining Plan period. This currently indicates that capacity will exist in the town to meet the demand.
Multipurpose health and wellbeing centre	PRIORITY	Mayfair Trustees, Church Stretton Town Council, NHS England	2011-2015	Cost: £812,000 Funding Secured: £600,000			The Town Council has identified that there is a need to improve health and social care facilities to cater for the existing population as well as any future increase in population. Health & Social Care Partnership has been formed to support and influence health and social care commissioning, including IT provision for distance diagnostics to reduce travel to hospitals for elderly patients. The Mayfair Trustees have secured over £600,000 to lease and adapt the medical centre into a multipurpose health and wellbeing centre. Work will begin over the summer of 2014. The Council's Extended Schools team has identified the need to consider the support that Sure Start Children's Centres provide in the area. Links already established with midwifery, health visitor services and GP practices supporting families of under 5s.
Provision of new changing facilities and pavilion at Brooksbury Recreation Ground.	PRIORITY	Shropshire Council, Church Stretton Town Council, Energize (Shropshire, Telford and Wrekin County Sports Partnership), Sport England		Cost: £250,000 Funding secured: £50,000	Sport England	Neighbourhood Fund, CIL (Local)	Identified as a priority through the Playing Pitch Improvement Plan. This is also a priority for the Town Council.

Infrastructure Requirement	Level of Priority	Delivery Partner(s)	Timing of Delivery	Potential Cost/ Funds Secured	Potential Funding		Notes
					Wider Sources	Developer Contributions	
On-site open space provision and maintenance to meet site design requirements and standards.	PRIORITY	Developers, Shropshire Council	Dependent on development	N/A		On-site design, Section 106	On-site design standards are identified within the Open Space Interim Planning Guidance (IPG) (Jan 2012) and the Natural Environment Supplementary Planning Document (SPD) (to be completed).
Provision and maintenance of facilities and equipment for sport, recreation and leisure. This includes but is not limited to: <ul style="list-style-type: none"> • Outdoor sports facilities. • Recreational facilities for children. • Allotments. 	PRIORITY	Shropshire Council, Town and Parish Councils	Dependent on development	N/A	Sport England, Fields in Trust	Neighbourhood Fund, CIL (Local)	<p>Provision to meet assessed need. Consultation in recent years has shown a desire from local people for a multi-use games area at the town park which the Town Council has prioritised. Under 5's play equipment to the Brooksbury play area is also still a priority for the Town Council.</p> <p>The Community Working Team has identified the need for:</p> <ul style="list-style-type: none"> • Appropriate allocation of equipment and time for specialist clubs or training of staff. Demand is becoming more apparent as outlets for the parent voice increase e.g. South West Community Working Groups, The 'Empathy' Group and organisations such as Parents and Carers Council and the Parent Partnership. • Provision for children with a disability and/or additional need. <p>The Playing Pitch Strategy has identified that:</p> <ul style="list-style-type: none"> • Church Stretton should have a minimum of 1 multi-pitch site providing for competition and training, with good quality on-site changing and toilet provision, appropriate for, and accessible to, all user types. • Playing pitches adjacent to Church Stretton School are of good quality but needing improvements to ancillary provision. • Brooksbury Recreation Ground requires new changing facilities (also a priority for the Town Council).

Infrastructure Requirement	Level of Priority	Delivery Partner(s)	Timing of Delivery	Potential Cost/ Funds Secured	Potential Funding		Notes
					Wider Sources	Developer Contributions	
							<ul style="list-style-type: none"> A playing pitch may be required for a new Rugby Club. There is need for mini soccer pitches in Church Stretton.
Improvements to Richard Robinsons Field.	KEY	Shropshire Council, Church Stretton Town Council			Sport England, Football Foundation, Local Sports Club, Town Council Funds	Neighbourhood Fund, CIL (Local)	Work was completed in summer 2013 on a sensory garden. Work will also be completed in the summer of 2014 on pitch and drainage improvement - £50k grant from Sport England; £12k from Football Foundation; £5k from sports club and £5k from Town Council.
Improved facilities at the Leisure Centre	KEY	Shropshire Council, Church Stretton Town Council, Church Stretton Leisure Centre				Neighbourhood Fund, CIL (Local)	Additional facilities required at the new leisure centre. i.e. all weather pitch. Refurbishment of the swimming pool is a major and much needed scheme. The Indoor Facilities Strategy has identified the need for indoor nets to be provided at the Leisure Centre.
Indoor Sports facilities	KEY	Shropshire Council	Ongoing			Neighbourhood Fund, CIL (Local)	The Indoor Facilities Strategy has recommended provision of indoor cricket facilities. (Indoor cricket nets are available at the leisure centre). Sports facilities are to be designed to a minimum playing standard of 'fit for purpose' depending on the terminology of the various national governing sporting bodies and Sport England Guidance.
ENVIRONMENT AND CLIMATE CHANGE							
Sewerage network capacity	CRITICAL	Developers, Severn Trent Water	Dependent on development		Developers	N/A	Hydraulic modelling of the wastewater network is required in order to assess whether there is capacity within the network to meet development needs. Developers will also need to provide sewers for some sites.

Infrastructure Requirement	Level of Priority	Delivery Partner(s)	Timing of Delivery	Potential Cost/ Funds Secured	Potential Funding		Notes
					Wider Sources	Developer Contributions	
Production of Operational Flood Response Plan	PRIORITY	Shropshire Council, Environment Agency, Severn Trent Water	Ongoing	£5,000		Section 106	In accordance with the Local Flood Risk Management Strategy the operational flood response plans, produced from condition surveys of the land drainage systems, will flag who is responsible for the maintenance of the systems which serve communities. The aim is to promote community awareness of these drainage systems such that communities can be more resilient.
TRANSPORT AND ACCESSIBILITY							
Provision of a public transport hub	KEY	Shropshire Council, Arriva (Deutsche Bahn)				Neighbourhood Fund, CIL (Local)	The Town Council is aiming to develop an integrated transport hub for the bus services and coach companies by the coach park at the rail station, with associated refreshment facilities plus possible commercial outlets e.g. mountain biking, walking.
Junction capacity, sustainability and safety improvements, where necessary, to facilitate specific development sites	CRITICAL	Shropshire Council				Section 106	To be determined as part of particular development proposals, as part of the planning application process
Local highway improvements, including speed and safety, public realm enhancements and sustainable travel	PRIORITY	Shropshire Council				CIL (Local)	The Town Council has highlighted their view that that off street parking in the market towns should be handed over to the town councils.
Improvements to railway station connectivity	KEY	Shropshire Council, Church Stretton Town Council				Neighbourhood Fund	Improve integration and connectivity of the Railway Station to the rest of the town centre and beyond, including increased wayfinding signs.

Rural Hinterland – Development related infrastructure requirements

Infrastructure Requirement	Level of Priority	Delivery Partner(s)	Timing of Delivery	Potential Cost/ Funds Secured	Potential Funding		Notes
					Wider Sources	Developer Contributions	
ACTON BURNELL, FRODESLEY, PITCHFORD, RUCKLEY AND LANGLEY PARISHES							
HOUSING AND COHESIVE, SUSTAINABLE COMMUNITIES							
Affordable housing provision	PRIORITY	Shropshire Council, Homes and Communities Agency, Registered Providers	Ongoing	Scheme dependent	Homes and Communities Agency, Registered Providers	Section 106	Within Shropshire, it is the Council's aspiration that all developments contribute to a sustainable mix of dwelling types, sizes and tenures. This will be either through on-site provision or payment of a sum to be used for provision of affordable housing. The Parish Council support the provision of some affordable homes.
ECONOMIC INVESTMENT AND OPPORTUNITY							
Facilitation of ICT/broadband technologies	KEY	Shropshire Council, Private sector delivery partner, Town and Parish Councils		Initially £16.4 million. £8.2million secured from BDUK. £8.2 million secured from Shropshire Council.		CIL (Local)	The Connecting Shropshire aims to provide a minimum of 2 Mbps to all of Shropshire and as much superfast broadband as possible. The project will deliver to those communities that are not going to get either basic broadband or superfast broadband under the private sector rollout. This is a community priority for many towns, villages and rural areas of Shropshire.
SOCIAL AND COMMUNITY INFRASTRUCTURE							
Leisure provision for young people	KEY	Acton Burnell, Frodesley and Pitchford Parish Council, Shropshire Council				On-site design, Section 106, Neighbourhood Fund, CIL (Local)	The Parish Council has identified the need to explore leisure opportunities.
On-site open space provision and maintenance to meet site design requirements and standards.	PRIORITY	Developers, Shropshire Council	Dependent on development	N/A		On-site design, Section 106	On-site design standards are identified within the Open Space Interim Planning Guidance (IPG) (Jan 2012) and the Natural Environment Supplementary Planning Document (SPD) (to be completed).

Infrastructure Requirement	Level of Priority	Delivery Partner(s)	Timing of Delivery	Potential Cost/ Funds Secured	Potential Funding		Notes
					Wider Sources	Developer Contributions	
Provision and maintenance of facilities and equipment for sport, recreation and leisure. This includes but is not limited to: <ul style="list-style-type: none"> Outdoor sports facilities. Recreational facilities for children. Allotments. 	PRIORITY	Shropshire Council, Town and Parish Councils	Dependent on development	N/A	Sport England, Fields in Trust	Neighbourhood Fund, CIL (Local)	Provision to meet assessed need.
ENVIRONMENT AND CLIMATE CHANGE							
TRANSPORT AND ACCESSIBILITY							
Local highway improvements, traffic management, parking provision and speed and safety	KEY	Shropshire Council, Acton Burnell, Frodesley and Pitchford Parish Council				Neighbourhood Fund, CIL (Local)	The Parish Council has identified the need for: <ul style="list-style-type: none"> Additional car parking in Acton Burnell near the castle; Traffic calming measures in the villages; Management of traffic on narrow lanes; and Improvements from King Street Junction to Acton Burnell. Improved safety of roads for cycling and pedestrians (particularly young families).

Infrastructure Requirement	Level of Priority	Delivery Partner(s)	Timing of Delivery	Potential Cost/ Funds Secured	Potential Funding		Notes
					Wider Sources	Developer Contributions	
ACTON SCOTT PARISH							
HOUSING AND COHESIVE, SUSTAINABLE COMMUNITIES							

Infrastructure Requirement	Level of Priority	Delivery Partner(s)	Timing of Delivery	Potential Cost/ Funds Secured	Potential Funding		Notes
					Wider Sources	Developer Contributions	
ECONOMIC INVESTMENT AND OPPORTUNITY							
Facilitation of ICT/broadband technologies	KEY	Shropshire Council, Private sector delivery partner, Town and Parish Councils		Initially £16.4 million. £8.2million secured from BDUK. £8.2 million secured from Shropshire Council.		CIL (Local)	The Connecting Shropshire aims to provide a minimum of 2 Mbps to all of Shropshire and as much superfast broadband as possible. The project will deliver to those communities that are not going to get either basic broadband or superfast broadband under the private sector rollout. This is a community priority for many towns, villages and rural areas of Shropshire.
SOCIAL AND COMMUNITY INFRASTRUCTURE							
On-site open space provision and maintenance to meet site design requirements and standards.	PRIORITY	Developers, Shropshire Council	Dependent on development	N/A		On-site design, Section 106	On-site design standards are identified within the Open Space Interim Planning Guidance (IPG) (Jan 2012) and the Natural Environment Supplementary Planning Document (SPD) (to be completed).
Provision and maintenance of facilities and equipment for sport, recreation and leisure. This includes but is not limited to: <ul style="list-style-type: none">• Outdoor sports facilities.• Recreational facilities for children.• Allotments.	PRIORITY	Shropshire Council, Town and Parish Councils	Dependent on development	N/A	Sport England, Fields in Trust	Neighbourhood Fund, CIL (Local)	Provision to meet assessed need.
ENVIRONMENT AND CLIMATE CHANGE							
TRANSPORT AND ACCESSIBILITY							

Infrastructure Requirement	Level of Priority	Delivery Partner(s)	Timing of Delivery	Potential Cost/ Funds Secured	Potential Funding		Notes
					Wider Sources	Developer Contributions	
ALL STRETTON, SMETHCOTT AND WOOLSTASTON PARISHES							
HOUSING AND COHESIVE, SUSTAINABLE COMMUNITIES							
ECONOMIC INVESTMENT AND OPPORTUNITY							
Facilitation of ICT/broadband technologies	KEY	Shropshire Council, Private sector delivery partner, Town and Parish Councils		Initially £16.4 million. £8.2million secured from BDUK. £8.2 million secured from Shropshire Council.		CIL (Local)	The Connecting Shropshire aims to provide a minimum of 2 Mbps to all of Shropshire and as much superfast broadband as possible. The project will deliver to those communities that are not going to get either basic broadband or superfast broadband under the private sector rollout. This is a community priority for many towns, villages and rural areas of Shropshire.
SOCIAL AND COMMUNITY INFRASTRUCTURE							
On-site open space provision and maintenance to meet site design requirements and standards.	PRIORITY	Developers, Shropshire Council	Dependent on development	N/A		On-site design, Section 106	On-site design standards are identified within the Open Space Interim Planning Guidance (IPG) (Jan 2012) and the Natural Environment Supplementary Planning Document (SPD) (to be completed).
Provision and maintenance of facilities and equipment for sport, recreation and leisure. This includes but is not limited to: <ul style="list-style-type: none">Outdoor sports facilities.Recreational facilities for children.Allotments.	PRIORITY	Shropshire Council, Town and Parish Councils	Dependent on development	N/A	Sport England, Fields in Trust	Neighbourhood Fund, CIL (Local)	Provision to meet assessed need.
ENVIRONMENT AND CLIMATE CHANGE							

Infrastructure Requirement	Level of Priority	Delivery Partner(s)	Timing of Delivery	Potential Cost/ Funds Secured	Potential Funding		Notes
					Wider Sources	Developer Contributions	
TRANSPORT AND ACCESSIBILITY							

Infrastructure Requirement	Level of Priority	Delivery Partner(s)	Timing of Delivery	Potential Cost/ Funds Secured	Potential Funding		Notes
					Wider Sources	Developer Contributions	
CARDINGTON PARISH							
HOUSING AND COHESIVE, SUSTAINABLE COMMUNITIES							
Affordable housing provision	PRIORITY	Shropshire Council, Homes and Communities Agency, Registered Providers	Ongoing	Scheme dependent		Section 106	Within Shropshire, it is the Council's aspiration that all developments contribute to a sustainable mix of dwelling types, sizes and tenures. This will be either through on-site provision or payment of a sum to be used for provision of affordable housing.
ECONOMIC INVESTMENT AND OPPORTUNITY							
Facilitation of ICT/broadband technologies	KEY	Shropshire Council, Private sector delivery partner, Town and Parish Councils		Initially £16.4 million. £8.2million secured from BDUK. £8.2 million secured from Shropshire Council.		CIL (Local)	The Connecting Shropshire aims to provide a minimum of 2 Mbps to all of Shropshire and as much superfast broadband as possible. The project will deliver to those communities that are not going to get either basic broadband or superfast broadband under the private sector rollout. This is a community priority for many towns, villages and rural areas of Shropshire.
SOCIAL AND COMMUNITY INFRASTRUCTURE							
On-site open space provision and maintenance to meet site design requirements and standards.	PRIORITY	Developers, Shropshire Council	Dependent on development	N/A		On-site design, Section 106	On-site design standards are identified within the Open Space Interim Planning Guidance (IPG) (Jan 2012) and the Natural Environment Supplementary Planning Document (SPD) (to be completed).

Infrastructure Requirement	Level of Priority	Delivery Partner(s)	Timing of Delivery	Potential Cost/ Funds Secured	Potential Funding		Notes
					Wider Sources	Developer Contributions	
Provision and maintenance of facilities and equipment for sport, recreation and leisure. This includes but is not limited to: <ul style="list-style-type: none"> Outdoor sports facilities. Recreational facilities for children. Allotments. 	PRIORITY	Shropshire Council, Town and Parish Councils	Dependent on development	N/A	Sport England, Fields in Trust	Neighbourhood Fund, CIL (Local)	Provision to meet assessed need.
ENVIRONMENT AND CLIMATE CHANGE							
TRANSPORT AND ACCESSIBILITY							

Infrastructure Requirement	Level of Priority	Delivery Partner(s)	Timing of Delivery	Potential Cost/ Funds Secured	Potential Funding		Notes
					Wider Sources	Developer Contributions	
EATON UNDER HEYWOOD							
HOUSING AND COHESIVE, SUSTAINABLE COMMUNITIES							
ECONOMIC INVESTMENT AND OPPORTUNITY							
Facilitation of ICT/broadband technologies	KEY	Shropshire Council, Private sector delivery partner, Town and Parish Councils		Initially £16.4 million. £8.2million secured from BDUK. £8.2 million secured from Shropshire Council.		CIL (Local)	The Connecting Shropshire aims to provide a minimum of 2 Mbps to all of Shropshire and as much superfast broadband as possible. The project will deliver to those communities that are not going to get either basic broadband or superfast broadband under the private sector rollout. This is a community priority for many towns, villages and rural areas of Shropshire.

Infrastructure Requirement	Level of Priority	Delivery Partner(s)	Timing of Delivery	Potential Cost/ Funds Secured	Potential Funding		Notes
					Wider Sources	Developer Contributions	
SOCIAL AND COMMUNITY INFRASTRUCTURE							
On-site open space provision and maintenance to meet site design requirements and standards.	PRIORITY	Developers, Shropshire Council	Dependent on development	N/A		On-site design, Section 106	On-site design standards are identified within the Open Space Interim Planning Guidance (IPG) (Jan 2012) and the Natural Environment Supplementary Planning Document (SPD) (to be completed).
Provision and maintenance of facilities and equipment for sport, recreation and leisure. This includes but is not limited to: <ul style="list-style-type: none">Outdoor sports facilities.Recreational facilities for children.Allotments.	PRIORITY	Shropshire Council, Town and Parish Councils	Dependent on development	N/A	Sport England, Fields in Trust	Neighbourhood Fund, CIL (Local)	Provision to meet assessed need.
ENVIRONMENT AND CLIMATE CHANGE							
TRANSPORT AND ACCESSIBILITY							

Infrastructure Requirement	Level of Priority	Delivery Partner(s)	Timing of Delivery	Potential Cost/ Funds Secured	Potential Funding		Notes
					Wider Sources	Developer Contributions	
HOPE BOWDLER PARISH							
HOUSING AND COHESIVE, SUSTAINABLE COMMUNITIES							
ECONOMIC INVESTMENT AND OPPORTUNITY							

Infrastructure Requirement	Level of Priority	Delivery Partner(s)	Timing of Delivery	Potential Cost/ Funds Secured	Potential Funding		Notes
					Wider Sources	Developer Contributions	
Facilitation of ICT/broadband technologies	KEY	Shropshire Council, Private sector delivery partner, Town and Parish Councils		Initially £16.4 million. £8.2million secured from BDUK. £8.2 million secured from Shropshire Council.		CIL (Local)	The Connecting Shropshire aims to provide a minimum of 2 Mbps to all of Shropshire and as much superfast broadband as possible. The project will deliver to those communities that are not going to get either basic broadband or superfast broadband under the private sector rollout. This is a community priority for many towns, villages and rural areas of Shropshire.
SOCIAL AND COMMUNITY INFRASTRUCTURE							
On-site open space provision and maintenance to meet site design requirements and standards.	PRIORITY	Developers, Shropshire Council	Dependent on development	N/A		On-site design, Section 106	On-site design standards are identified within the Open Space Interim Planning Guidance (IPG) (Jan 2012) and the Natural Environment Supplementary Planning Document (SPD) (to be completed).
Provision and maintenance of facilities and equipment for sport, recreation and leisure. This includes but is not limited to: <ul style="list-style-type: none"> • Outdoor sports facilities. • Recreational facilities for children. • Allotments. 	PRIORITY	Shropshire Council, Town and Parish Councils	Dependent on development	N/A	Sport England, Fields in Trust	Neighbourhood Fund, CIL (Local)	Provision to meet assessed need.
ENVIRONMENT AND CLIMATE CHANGE							
TRANSPORT AND ACCESSIBILITY							

Infrastructure Requirement	Level of Priority	Delivery Partner(s)	Timing of Delivery	Potential Cost/ Funds Secured	Potential Funding		Notes
					Wider Sources	Developer Contributions	
LEEBOOTWOOD AND LONGNOR PARISH							
HOUSING AND COHESIVE, SUSTAINABLE COMMUNITIES							
ECONOMIC INVESTMENT AND OPPORTUNITY							
Facilitation of ICT/broadband technologies	KEY	Shropshire Council, Private sector delivery partner, Town and Parish Councils		Initially £16.4 million. £8.2million secured from BDUK. £8.2 million secured from Shropshire Council.		CIL (Local)	The Connecting Shropshire aims to provide a minimum of 2 Mbps to all of Shropshire and as much superfast broadband as possible. The project will deliver to those communities that are not going to get either basic broadband or superfast broadband under the private sector rollout. This is a community priority for many towns, villages and rural areas of Shropshire.
SOCIAL AND COMMUNITY INFRASTRUCTURE							
On-site open space provision and maintenance to meet site design requirements and standards.	PRIORITY	Developers, Shropshire Council	Dependent on development	N/A		On-site design, Section 106	On-site design standards are identified within the Open Space Interim Planning Guidance (IPG) (Jan 2012) and the Natural Environment Supplementary Planning Document (SPD) (to be completed).
Provision and maintenance of facilities and equipment for sport, recreation and leisure. This includes but is not limited to: <ul style="list-style-type: none">Outdoor sports facilities.Recreational facilities for children.Allotments.	PRIORITY	Shropshire Council, Town and Parish Councils	Dependent on development	N/A	Sport England, Fields in Trust	Neighbourhood Fund, CIL (Local)	Provision to meet assessed need.

Infrastructure Requirement	Level of Priority	Delivery Partner(s)	Timing of Delivery	Potential Cost/ Funds Secured	Potential Funding		Notes
					Wider Sources	Developer Contributions	
Provision of new village hall in Longnor	CRITICAL	Leebotwood and Longnor Parish Council, Shropshire Council				Neighbourhood Fund, CIL (Local)	The Parish Council has identified the need for a new village hall in Longnor as the current hall is not fit for purpose and does not meet the community needs.
Development of a village green in Longnor	KEY	Longnor Parish Council				Neighbourhood Fund, CIL (Local)	The Parish Council has identified the need to find a suitable site.
ENVIRONMENT AND CLIMATE CHANGE							
Create a Local Nature Reserve in Leebotwood		Leebotwood and Longnor Parish Council, Shropshire Council, Shropshire Wildlife Trust					The Parish Council has identified the desire to establish a local nature reserve when a suitable parcel of land becomes available.
TRANSPORT AND ACCESSIBILITY							
Improved signage for cyclists	KEY	Shropshire Council, Leebotwood and Longnor Parish Council, Highways Agency				Neighbourhood Fund, CIL (Local)	The Parish Council has identified the need for signage to show the preferred alternative cycle route to avoid the A49 trunk road in Leebotwood.

Infrastructure Requirement	Level of Priority	Delivery Partner(s)	Timing of Delivery	Potential Cost/ Funds Secured	Potential Funding		Notes
					Wider Sources	Developer Contributions	
RUSHBURY PARISH							
HOUSING AND COHESIVE, SUSTAINABLE COMMUNITIES							
ECONOMIC INVESTMENT AND OPPORTUNITY							
Facilitation of	KEY	Shropshire		Initially £16.4		CIL (Local)	The Connecting Shropshire aims to provide a

Infrastructure Requirement	Level of Priority	Delivery Partner(s)	Timing of Delivery	Potential Cost/ Funds Secured	Potential Funding		Notes
					Wider Sources	Developer Contributions	
ICT/broadband technologies		Council, Private sector delivery partner, Town and Parish Councils		million. £8.2million secured from BDUK. £8.2 million secured from Shropshire Council.			minimum of 2 Mbps to all of Shropshire and as much superfast broadband as possible. The project will deliver to those communities that are not going to get either basic broadband or superfast broadband under the private sector rollout. This is a community priority for many towns, villages and rural areas of Shropshire.
SOCIAL AND COMMUNITY INFRASTRUCTURE							
ENVIRONMENT AND CLIMATE CHANGE							
Improved provision of recycling facilities	PRIORITY	Shropshire Council, Rushbury Parish Council					The Parish Council has identified the need to improve local recycling facilities, particularly for plastic and cardboard.
Improved main sewers	PRIORITY	Severn Trent Water					The Parish Council identified a need to find solutions to the current problems with main sewers.
TRANSPORT AND ACCESSIBILITY							
Local highway improvements, traffic management, parking provision and speed and safety enhancements	PRIORITY		Ongoing			Neighbourhood Fund, CIL (Local)	<p>The Parish Council has identified the need for</p> <ul style="list-style-type: none"> • Improved bus timetables. • Investigation of specific improvements to Rushbury to Wall the pedestrian passage • Footpaths on the B4371 and on the Wall to Rushbury Road. <p>The Parish Council has also identified the need to address issues at:</p> <ul style="list-style-type: none"> • The B4371 Wall Bank to Longville side of village hall. • The B4371 through Longville Village. • The B4371 Stone Acton, Gilberries Lane, Heath Common and East Wall junction.

4. WIDER INVESTMENT PRIORITIES IN CHURCH STRETTON PLACE PLAN AREA

- 4.1.1 In addition to the infrastructure considered vital for the achievement of the vision for Church Stretton and consequently the Shropshire Development Strategy, there is also a significant range of wider investment priorities that have been identified for Church Stretton, which would support the wider sustainability of the communities within the Place Plan area.
- 4.1.2 The table below sets out these investment priorities which would support the wider sustainability of the communities within the Place Plan area.

Church Stretton Town – Wider investment priorities

Infrastructure Requirement	Level of Priority	Delivery Partner(s)	Timing of Delivery	Potential Cost/ Funds Secured	Potential Funding		Notes
					Wider Sources	Developer Contributions	
HOUSING AND COHESIVE, SUSTAINABLE COMMUNITIES							
Second stage semi-detached housing	PRIORITY	Shropshire Council, Registered Providers, Developers	Ongoing	N/A		On-site design	The Town Council has identified a need for more second stage housing to cater for growing families, allowing them to move on.
Housing for vulnerable people	Key	Shropshire Council, Homes and Communities Agency, Registered Providers, Specialist Care Providers, Voluntary Sector, local communities, schools and colleges, West Mercia Police	Ongoing	Varies from scheme to scheme	Homes and Communities Agency, Shropshire Council capital programme		Includes provision to support sustainable independent living for vulnerable people including: sustainable living at home; access to work and education and training and community inclusion. Integrated preventative service provision with a <i>pathway</i> approach to access and retain accommodation. Target groups include: older people, young people, people with learning disabilities, mental health needs, people at risk of homelessness or domestic violence, gypsies and travellers, offenders, substance misusers etc.

Infrastructure Requirement	Level of Priority	Delivery Partner(s)	Timing of Delivery	Potential Cost/ Funds Secured	Potential Funding		Notes
					Wider Sources	Developer Contributions	
Improving and adapting existing housing- includes regeneration	KEY	Shropshire Council, Registered Providers, Home owners, Keep Shropshire Warm, Developers, Shropshire Home Improvement Agency, Stretton Climate Care, Schools and Sure Start Childrens' Centres	2011-2015	Scheme dependent*	Private sector funding		Includes: <ul style="list-style-type: none"> • energy efficiency to reduce carbon emissions and tackle fuel poverty; • upgrading social housing to meet the Decent Homes standard; and • adaptations to meet changing needs, including disabled facilities grants. The Council's Extended Schools Team has identified opportunities to inform and encourage parents to understand what they can do to improve energy efficiency of homes and how this can benefit them, through schools (Eco-Schools involvement) and children's centre drop-ins and activities.(Developing Environmentally Sustainable Sure Start Children's centres is being piloted in NW at Woodside, Oswestry rolling out to other centres later). Stretton Climate care carry out free home energy surveys for local residents. * Funding secured for social housing- Tenant wide: £2.5 million available for social housing (per year). Also a further £3.1million over 4 years starting April 2011 from the HCA for decent homes.
Aids and adaptations for social housing tenants	KEY	Shropshire Council	Ongoing	Scheme dependent*	Shropshire Council		The £225,000 is to be used across Shropshire Council tenant's homes for completing adaptations to tenant's properties. For example the money will be spent on Level Access Showers, Hand rails and stair lifts etc. The aim of completing adaptations is to improve the quality of life of our tenants and to give them the opportunity to stay in their homes. *Funding secured for aids and adaptations - Tenant Wide: £225,000 (per year) for Social Housing.

Infrastructure Requirement	Level of Priority	Delivery Partner(s)	Timing of Delivery	Potential Cost/ Funds Secured	Potential Funding		Notes
					Wider Sources	Developer Contributions	
Bringing empty homes back into use- includes affordable housing provision	KEY	Shropshire Council, Registered Providers, Property Owners, Local communities, voluntary sector agencies, schools and colleges	2011-2015	Scheme dependent	Empty Homes: New Homes Bonus	Section 106	Funding to be put in place- scheme costs vary and are generally a package of funding. Seeking Homes and Communities Agency funding for 12 units countywide over 4 years @ £25,000 per unit= £300,000. Limited local authority funding available during 2011-2012.
Extra Care Housing	KEY	Shropshire Council, Registered Providers, Care Providers, Voluntary Sector, Local Communities	2012-2015	Scheme dependent	Developer led.		Locations to be determined. To include Market Town and Rural Area provision. Funding proposals being developed. Extra Care Housing provision targeted towards older people, especially frail older people, with planned provision for respite facilities and housing for people with disabilities.
ECONOMIC INVESTMENT AND OPPORTUNITY							
Market Towns revitalisation Programme- Larger Market Towns Capital Programme. Phase 1 fully committed.	PRIORITY	Shropshire Council, Local businesses, residents, investors	2010-2015	Cost: £225,000 Funding secured: £225,000	Shropshire Council capital programme, Match-funding from Small Business Grant Scheme.		All funding is now fully committed. Programme to support a range of capital projects which meet the Market Towns Revitalisation Programme objectives. Includes: <ul style="list-style-type: none"> • Silvester Horne Institute refurbishment. • Mayfair centre alterations to improve sustainability. • Gateways signage for the town. • Maps/boards around the town to support tourism. • Grant scheme for town centre businesses.

Infrastructure Requirement	Level of Priority	Delivery Partner(s)	Timing of Delivery	Potential Cost/ Funds Secured	Potential Funding		Notes
					Wider Sources	Developer Contributions	
Marketing Church Stretton as a tourism hub.	PRIORITY	Church Stretton Town Council, Shropshire Council	Ongoing	Cost: £15,000 Funding Secured: £7,500	£3,500 bid to AONB Sustainable Business Fund. Balance to be sought from LJC or Market Towns Revitalisation Programme		Town Council priority linked to success of Leader marketing project in 2012 – 13.
Provision of Live-Work units	KEY	Shropshire Council, Private developers	Ongoing		Developers		The Town Council has identified a need for live-work units to encourage young professionals to the town.
Town Centre Revitalisation Grant (see MTRP funding above)	KEY	Shropshire Council, Church Stretton Town Council	Ongoing	Funding Secured: £26,500			£26,500 secured through MTRP. Funding for capital works to town centre businesses to increase turnover and increase usable floorspace. Town Council has produced a Shop Front Guide which has been adopted and accepted by Chamber of Trade, Civic Society and Shropshire Council. This guide also reflects the results of a town signage audit (performed by the Town Council), which will be monitored and commented on as appropriate.
SOCIAL AND COMMUNITY INFRASTRUCTURE							
Review of Children's Centre services	PRIORITY	Shropshire Council	Dependent upon developers' timescales	Dependent upon extent and location of development	Private sector financed	Neighbourhood Fund, CIL (Local)	A children's centre is defined by law as a place or group of places: <ul style="list-style-type: none"> Managed by, or on behalf of, an English local authority, with a view to securing that early childhood services are made available in an integrated manner through which early childhood services are made available – either by provision of services on site, or by

Infrastructure Requirement	Level of Priority	Delivery Partner(s)	Timing of Delivery	Potential Cost/ Funds Secured	Potential Funding		Notes
					Wider Sources	Developer Contributions	
							<p>the provision of advice and assistance in gaining access to services elsewhere</p> <ul style="list-style-type: none"> • At which (some) activities for young children are provided on site. <p>Children's Centre services are delivered throughout Shropshire. Residential development creates the following impact on children's centres:</p> <ul style="list-style-type: none"> • A higher volume of parents and carers accessing provision in what tend to be relatively small spaces, resulting in the potential of further investment required to increase space. • Where the children's centre services are delivered in part of an existing school building, increasing demand for school places can result in conversion of this space back into a Primary School. <p>Facilities must therefore be reviewed and sufficient provision made available to support expected development.</p> <p>Within Church Stretton the Children's Centre is purpose built stand-alone demountable building co-located with an early education provide on school site.</p>
Shropshire Hills LEADER Programme (focus on hinterland not the market town)	KEY	AONB (with Shropshire Council as accountable body)	New round in next 12 months		RDPE		New round of LEADER in the next 12 months. Town Council keen again to access funds to build on the success of the previous 18 month marketing project.
ENVIRONMENT AND CLIMATE CHANGE							
Investigate opportunity to increase the channel capacity within the brook in Swains Meadow to provide additional storage / capacity.	PRIORITY	Shropshire Council		£10,000		Neighbourhood Fund	Identified as part of the Church Stretton Surface Water Management Plan.

Infrastructure Requirement	Level of Priority	Delivery Partner(s)	Timing of Delivery	Potential Cost/ Funds Secured	Potential Funding		Notes
					Wider Sources	Developer Contributions	
Investigate the opportunity to undertake detailed design for construction of a replacement silt trap at Carding Mill Valley.	PRIORITY	Shropshire Council		£10,000		Neighbourhood Fund	Identified as part of the Church Stretton Surface Water Management Plan.
Investigate the opportunity to improve the conveyance and capacity of culverts draining west of Church Stretton.	PRIORITY	Shropshire Council		£10,000		Neighbourhood Fund	Identified as part of the Church Stretton Surface Water Management Plan.
Establishment of environmental networks- Long Mynd to Wenlock Edge	KEY	Town Council, Shropshire Council				Neighbourhood Fund	The Town Council has identified that there are opportunities to increase visitor connectedness between environmental assets, such as the Long Mynd and Wenlock Edge (restoration of Lea Quarry).
Urban Landscape Character Assessment	KEY	Shropshire Council	Aspirational	c£3,200		Neighbourhood Fund	Undertake an Urban Landscape Character Assessment of Church Stretton.
Survey of important views in and out of Church Stretton.	KEY	Shropshire Council	Ongoing.			Neighbourhood Fund	Fundamental/important town views in and out to be surveyed. Introduce accessible public areas such as walkways, promenades, seating facilities.
Production of list of Locally Important Buildings.	KEY	Shropshire Council, Church Stretton Town Council, Civic Society, English Heritage	Ongoing			Neighbourhood Fund	Local Listing Initiatives supported by English Heritage. Undertake public consultation exercise to create list of 'Buildings of Local Architectural or Historic Interest' (non-statutory list) List would identify local heritage assets that are valued by local community but not statutorily listed that would be afforded some degree of protection in the planning system. Involves survey work, preparation of report to Cabinet, publication of list, promotion of list

Infrastructure Requirement	Level of Priority	Delivery Partner(s)	Timing of Delivery	Potential Cost/ Funds Secured	Potential Funding		Notes
					Wider Sources	Developer Contributions	
Heritage at Risk register	KEY	Shropshire Council, English Heritage	Ongoing			Neighbourhood Fund	Engage local groups to identify future Buildings at Risk.
Shropshire Community Archaeological Fund	KEY	Shropshire Council				Neighbourhood Fund	Opportunity for the development of a fund in support of targeted community-led archaeology projects.
Community Tree Scheme	KEY	Shropshire Council, Developers	Ongoing	Cost: C£2640 per ha planted with tree whips. C£260 per new street tree. Funding Secured: £5000 to be shared throughout the council and provision of 10,000 trees	Shropshire Council Highways, Maelar Forest Nurseries, Whitchurch		Run an extensive Community Tree Scheme to provide opportunities to enhance the natural environment of the area. Costs include planting, stakes, tree guards and watering to establish trees over first 3 years.
TRANSPORT AND ACCESSIBILITY							
Retention of the ring and ride service	KEY	Shropshire Council, Church Stretton Town Council Arriva (Deutsche Bahn)				Neighbourhood Fund	The Town Council has identified that the protection and enhancement of the Ring and Ride Service and AONB shuttle service is needed both for the ageing populations of the rural villages and the planned expansion of visitor numbers in the Shropshire Hills.
Church Stretton station improvements	KEY	DfT, Arriva Trains Wales, Network Rail	Ongoing		DfT via National Stations Improvement Scheme		New shelters and electronic timetables have now been installed. However, uneven platform levels still result in puddles after rain. The footbridge at the station is in need of repainting and the footbridge south of the station is in great need of refurbishment, including the replacement of vandal proof lights. The stiles for the foot crossing north of the station need replacing to allow access to the Park and Nature Reserve for elderly and disabled.

Infrastructure Requirement	Level of Priority	Delivery Partner(s)	Timing of Delivery	Potential Cost/ Funds Secured	Potential Funding		Notes
					Wider Sources	Developer Contributions	
Covered cycle shelter at station	KEY	Shropshire Council, Arriva Trains	Aspirational		Shropshire Council capital programme	Neighbourhood Fund	
Improvement to the Heart of Wales line, between Shrewsbury and Knighton, via Church Stretton and Craven Arms	KEY	Arriva Trains Wales, Welsh Assembly Government			Welsh Assembly Government Funding		The Rail Forward Programme for Wales identifies proposals for additional services on the Heart of Wales line which are given a high ranking for early approval subject to feasibility and business case work. The Town Council has identified that Arriva Trains Wales has reduced the number of trains stopping at Church Stretton. Arriva Trains is therefore being pressed to equalise its marketing of English stations on the Heart of Wales Line with that which it provides for the Welsh stations.
Improvements to connectivity	KEY	Shropshire Council	Ongoing		Shropshire Council	Neighbourhood Fund	Identify opportunities to improve links/connectivity between the church/town centre/park lands.
Installation of historic finger posts, way markers, milestones, mileposts & street signs.	KEY	Shropshire Council	Ongoing			Neighbourhood Fund	Survey of existing conditions and research into lost features. Repair or reinstate where necessary.
Various rights of way improvements to create new circular walks - removal of stiles and replacement of gates and enhanced directional signage to ensure easier access for all and to support 'Active Market Town' and sustainable transport initiatives	KEY	Shropshire Council	2011-2026	£35,400.00	LTP funding	Neighbourhood Fund	Replacing 84 existing stiles with gates for easier access improvements to the Rights of Way network and providing 78 new directional signposts. Creation and enhancement of routes to create The Shropshire Way and Jack Mytton Way + new circular walks and promotion of 'health walks'. The Council's Extended Schools Team has identified the need to tie in with 'Healthy Living' work in schools, preschool settings and youth organisations. There is an opportunity for young people and families to participate in planning the design of new routes.

Infrastructure Requirement	Level of Priority	Delivery Partner(s)	Timing of Delivery	Potential Cost/ Funds Secured	Potential Funding		Notes
					Wider Sources	Developer Contributions	
Improvement of car parks	KEY	Shropshire Council	Ongoing			Neighbourhood Fund	Identify opportunities to improve the visual amenity of car parks in the historic town centre. Increase provision of wayfinding signs and landscaping.

Rural Hinterland – Wider investment priorities

Infrastructure Requirement	Level of Priority	Delivery Partner(s)	Timing of Delivery	Potential Cost/ Funds Secured	Potential Funding		Notes
					Wider Sources	Developer Contributions	
ACTON BURNELL, FRODESLEY, PITCHFORD, RUCKLEY AND LANGLEY PARISHES							
HOUSING AND COHESIVE, SUSTAINABLE COMMUNITIES							
ECONOMIC INVESTMENT AND OPPORTUNITY							
Create a local business directory	KEY	Acton Burnell, Frodesley and Pitchford Parish Council, Shropshire Council				Neighbourhood Fund	The Parish Council has expressed a desire to create a local business directory.
Improved telecommunications reception	KEY	Acton Burnell, Frodesley and Pitchford Parish Council, Service provider			Service provider		The Parish Council has identified the need to improve telecommunications reception in the area.
SOCIAL AND COMMUNITY INFRASTRUCTURE							
Prescription collection service	KEY	NHS England, Acton Burnell, Frodesley and Pitchford Parish Council				Neighbourhood Fund	The Parish Council has identified the wish to facilitate a prescription collection service.
Improvements to the Village Hall	KEY	Village Hall Management Committee, Acton Burnell, Frodesley and Pitchford Parish Council				Neighbourhood Fund	The Parish Council has identified the need for the following improvements: <ul style="list-style-type: none">• Refurbishing the kitchen• Purchasing 80 new chairs and 20 new tables• Disabled access and ramp• Replacement windows
Improvements to mobile library	KEY	Acton Burnell, Frodesley and Pitchford Parish Council, Shropshire Council				Neighbourhood Fund	The Parish Council has identified the need to improve the timings of the mobile library.

Infrastructure Requirement	Level of Priority	Delivery Partner(s)	Timing of Delivery	Potential Cost/ Funds Secured	Potential Funding		Notes
					Wider Sources	Developer Contributions	
ENVIRONMENT AND CLIMATE CHANGE							
Community Tree Scheme	KEY	Shropshire Council, Developers	Ongoing	c£2640 per ha planted with tree whips, c£260 per new street tree. Funding Secured: £5,000 to be shared throughout the council and provision of 10,000 trees	Shropshire Council Highways, Maelar Forest Nurseries, Whitchurch		Run an extensive Community Tree Scheme to provide opportunities to enhance the natural environment of the area. Costs include planting, stakes, tree guards and watering to establish trees over first 3 years.
TRANSPORT AND ACCESSIBILITY							
Set up a voluntary car scheme	KEY	Acton Burnell, Frodesley and Pitchford Parish Council				Neighbourhood Fund	The Parish Council has expressed the desire to set up voluntary car scheme.
Transport for young people	KEY	Acton Burnell, Frodesley and Pitchford Parish Council					The Parish Council has expressed the desire to provide transport options for young people.
Drainage of the lanes	KEY	Acton Burnell, Frodesley and Pitchford Parish Council, Shropshire Council				Neighbourhood Fund	The Parish Council has identified the need to improve drainage on lanes resulting from localised flooding.

Infrastructure Requirement	Level of Priority	Delivery Partner(s)	Timing of Delivery	Potential Cost/ Funds Secured	Potential Funding		Notes
					Wider Sources	Developer Contributions	
ACTON SCOTT PARISH							
HOUSING AND COHESIVE, SUSTAINABLE COMMUNITIES							
ECONOMIC INVESTMENT AND OPPORTUNITY							
SOCIAL AND COMMUNITY INFRASTRUCTURE							
ENVIRONMENT AND CLIMATE CHANGE							
Community Tree Scheme	KEY	Shropshire Council, Developers	Ongoing	c£2640 per ha planted with tree whips, c£260 per new street tree. Funding Secured: £5,000 to be shared throughout the council and provision of 10,000 trees	Shropshire Council Highways, Maelar Forest Nurseries, Whitchurch		Run an extensive Community Tree Scheme to provide opportunities to enhance the natural environment of the area. Costs include planting, stakes, tree guards and watering to establish trees over first 3 years.
TRANSPORT AND ACCESSIBILITY							

Infrastructure Requirement	Level of Priority	Delivery Partner(s)	Timing of Delivery	Potential Cost/ Funds Secured	Potential Funding		Notes
					Wider Sources	Developer Contributions	
ALL STRETTON, SMETHCOTT AND WOOLSTASTON PARISHES							
HOUSING AND COHESIVE, SUSTAINABLE COMMUNITIES							
ECONOMIC INVESTMENT AND OPPORTUNITY							

Infrastructure Requirement	Level of Priority	Delivery Partner(s)	Timing of Delivery	Potential Cost/ Funds Secured	Potential Funding		Notes
					Wider Sources	Developer Contributions	
SOCIAL AND COMMUNITY INFRASTRUCTURE							
ENVIRONMENT AND CLIMATE CHANGE							
Community Tree Scheme	KEY	Shropshire Council, Developers	Ongoing	c£2640 per ha planted with tree whips, c£260 per new street tree. Funding Secured: £5,000 to be shared throughout the council and provision of 10,000 trees	Shropshire Council Highways, Maelar Forest Nurseries, Whitchurch		Run an extensive Community Tree Scheme to provide opportunities to enhance the natural environment of the area. Costs include planting, stakes, tree guards and watering to establish trees over first 3 years.
TRANSPORT AND ACCESSIBILITY							

Infrastructure Requirement	Level of Priority	Delivery Partner(s)	Timing of Delivery	Potential Cost/ Funds Secured	Potential Funding		Notes
					Wider Sources	Developer Contributions	
CARDINGTON							
HOUSING AND COHESIVE, SUSTAINABLE COMMUNITIES							
ECONOMIC INVESTMENT AND OPPORTUNITY							
SOCIAL AND COMMUNITY INFRASTRUCTURE							
ENVIRONMENT AND CLIMATE CHANGE							
Community Tree Scheme	KEY	Shropshire Council,	Ongoing	c£2640 per ha planted with tree	Shropshire Council		Run an extensive Community Tree Scheme to provide opportunities to enhance the

Infrastructure Requirement	Level of Priority	Delivery Partner(s)	Timing of Delivery	Potential Cost/ Funds Secured	Potential Funding		Notes
					Wider Sources	Developer Contributions	
		Developers		whips, c£260 per new street tree. Funding Secured: £5,000 to be shared throughout the council and provision of 10,000 trees	Highways, Maelar Forest Nurseries, Whitchurch		natural environment of the area. Costs include planting, stakes, tree guards and watering to establish trees over first 3 years.
TRANSPORT AND ACCESSIBILITY							

Infrastructure Requirement	Level of Priority	Delivery Partner(s)	Timing of Delivery	Potential Cost/ Funds Secured	Potential Funding		Notes
					Wider Sources	Developer Contributions	
EATON UNDER HEYWOOD							
HOUSING AND COHESIVE, SUSTAINABLE COMMUNITIES							
ECONOMIC INVESTMENT AND OPPORTUNITY							
SOCIAL AND COMMUNITY INFRASTRUCTURE							
ENVIRONMENT AND CLIMATE CHANGE							
Community Tree Scheme	KEY	Shropshire Council, Developers	Ongoing	c£2640 per ha planted with tree whips, c£260 per new street tree. Funding Secured: £5,000 to be shared throughout the	Shropshire Council Highways, Maelar Forest Nurseries, Whitchurch		Run an extensive Community Tree Scheme to provide opportunities to enhance the natural environment of the area. Costs include planting, stakes, tree guards and watering to establish trees over first 3 years.

Infrastructure Requirement	Level of Priority	Delivery Partner(s)	Timing of Delivery	Potential Cost/ Funds Secured	Potential Funding		Notes
					Wider Sources	Developer Contributions	
				council and provision of 10,000 trees			
TRANSPORT AND ACCESSIBILITY							

Infrastructure Requirement	Level of Priority	Delivery Partner(s)	Timing of Delivery	Potential Cost/ Funds Secured	Potential Funding		Notes
					Wider Sources	Developer Contributions	
HOPE BOWDLER							
HOUSING AND COHESIVE, SUSTAINABLE COMMUNITIES							
ECONOMIC INVESTMENT AND OPPORTUNITY							
SOCIAL AND COMMUNITY INFRASTRUCTURE							
ENVIRONMENT AND CLIMATE CHANGE							
Community Tree Scheme	KEY	Shropshire Council, Developers	Ongoing	c£2640 per ha planted with tree whips, c£260 per new street tree. Funding Secured: £5,000 to be shared throughout the council and provision of 10,000 trees	Shropshire Council Highways, Maelar Forest Nurseries, Whitchurch		Run an extensive Community Tree Scheme to provide opportunities to enhance the natural environment of the area. Costs include planting, stakes, tree guards and watering to establish trees over first 3 years.
TRANSPORT AND ACCESSIBILITY							

Infrastructure Requirement	Level of Priority	Delivery Partner(s)	Timing of Delivery	Potential Cost/ Funds Secured	Potential Funding		Notes
					Wider Sources	Developer Contributions	
LEEBOOTWOOD AND LONGNOR							
HOUSING AND COHESIVE, SUSTAINABLE COMMUNITIES							
ECONOMIC INVESTMENT AND OPPORTUNITY							
SOCIAL AND COMMUNITY INFRASTRUCTURE							
Improvements to Parish noticeboards	KEY	Leebotwood and Longnor Parish Council				Neighbourhood Fund	The Parish Council has identified the need to review current noticeboard provision.
Establish a tourist information point in Leebotwood	KEY	Leebotwood and Longnor Parish Council				Neighbourhood Fund	The Parish Council wish to debate the need and location of a tourist information point.
ENVIRONMENT AND CLIMATE CHANGE							
Community Tree Scheme	KEY	Shropshire Council, Developers	Ongoing	c£2640 per ha planted with tree whips, c£260 per new street tree. Funding Secured: £5,000 to be shared throughout the council and provision of 10,000 trees	Shropshire Council Highways, Maelar Forest Nurseries, Whitchurch		Run an extensive Community Tree Scheme to provide opportunities to enhance the natural environment of the area. Costs include planting, stakes, tree guards and watering to establish trees over first 3 years.
TRANSPORT AND ACCESSIBILITY							
Increase mowing of roadside verges in Leebotwood	KEY	Leebotwood and Longnor Parish Council, Shropshire Council, Highways Agency					The Parish Council has identified the need for more frequent mowing of roadside verges.

Infrastructure Requirement	Level of Priority	Delivery Partner(s)	Timing of Delivery	Potential Cost/ Funds Secured	Potential Funding		Notes
					Wider Sources	Developer Contributions	
Footpath improvements in Longnor	KEY	Leebotwood and Longnor Parish Council, Shropshire Council				Neighbourhood Fund	The Parish Council has identified the need for improvements and additional signage, repaired or renewed bridges and stiles, general maintenance and the production of maps and leaflets.
Resurfacing of Longnor Village Hall Car Park	Key	Leebotwood and Longnor Parish Council, Shropshire Council				Neighbourhood Fund	The Parish Council has identified the need to resurface the car park.

Infrastructure Requirement	Level of Priority	Delivery Partner(s)	Timing of Delivery	Potential Cost/ Funds Secured	Potential Funding		Notes
					Wider Sources	Developer Contributions	
RUSHBURY							
HOUSING AND COHESIVE, SUSTAINABLE COMMUNITIES							
ECONOMIC INVESTMENT AND OPPORTUNITY							
Support for local businesses	KEY	Rushbury Parish Council, Shropshire Council				Neighbourhood Fund	The Parish Council has identified the need to provide support for local businesses.
Replacement of existing Phone Cables	KEY				Service provider		The Parish Council identified a wish to see the replacement of existing copper phone cables with fibre optics.
SOCIAL AND COMMUNITY INFRASTRUCTURE							
Improved Parish communications	KEY	Rushbury Parish Council				Neighbourhood Fund	The Parish Council has identified the need for improved Parish Communications including improved noticeboards and potentially also a Parish website.
ENVIRONMENT AND CLIMATE CHANGE							

Infrastructure Requirement	Level of Priority	Delivery Partner(s)	Timing of Delivery	Potential Cost/ Funds Secured	Potential Funding		Notes
					Wider Sources	Developer Contributions	
Community Tree Scheme	KEY	Shropshire Council, Developers	Ongoing	c£2640 per ha planted with tree whips, c£260 per new street tree. Funding Secured: £5,000 to be shared throughout the council and provision of 10,000 trees	Shropshire Council Highways, Maelar Forest Nurseries, Whitchurch		Run an extensive Community Tree Scheme to provide opportunities to enhance the natural environment of the area. Costs include planting, stakes, tree guards and watering to establish trees over first 3 years.
TRANSPORT AND ACCESSIBILITY							

APPENDIX A: COMMUNITY ENGAGEMENT AND CONSULTATION FOR CHURCH STRETTON PLACE PLAN AREA

Community Led Plans

A new Town Plan is currently being developed for Church Stretton and will be completed by the start of 2015. The following have been identified from the current Church Stretton Town Plan (2008-2013) as community needs and priorities:

- Local businesses and shops- including supporting local produce
- Promotion of rural businesses- importance of market towns as cornerstones of local sustainable economies
- Promote local business opportunity and enterprise, including the promotion of home working
- Recruitment, training and retention of local people
- Faster broadband services and the expansion of other e-communication networks
- Sustainable tourism
- Expansion of outdoor activities
- Attractive, pedestrian friendly town centre
- Year round programme of events and visitor attractions
- Parking- on and off street parking arrangements and parking enforcement regime
- Public transport provision- including provision of bus shelters and real time indicator boards and proper coach drop off facilities
- Signage and improved road safety
- Local housing needs- affordable housing for local families in need
- Local character- town design
- Energy saving adaptations to existing and future housing
- Diverse range of training opportunities offered by local schools and colleges
- Links between local schools/colleges and local businesses
- Training events and courses to attract visitors- eg geology
- Medical Centre- matching resources to demands
- Health promotion initiatives
- Facilities and support for disabled and elderly residents
- Information and publicity to discourage alcohol and drug/substance misuse
- Infrastructure requirements
- Visual appearance and street cleanliness of the town
- Crime Reduction Partnership- elimination of persistent vandalism
- Opportunities for recycling
- Information and publicity for reducing carbon footprints and better climate care
- Conserve rural environment and local wildlife
- Maximise the sense of community ownership of the new Community Leisure Centre
- Upgrading of the playing fields, with a new Pavilion, together with appropriate parking capacity
- Improve Park's facilities- BMX track, skate park and other possible initiatives eg graffiti wall
- All weather pitch behind the school to facilitate year round sports training
- Improved spectator facilities for sporting events and competitions
- Establishment of a museum, art gallery and sculpture park

Acton Burnell, Frodesley, Pitchford, Ruckley and Langley Parish Plan (2013)

The following have been taken from the Acton Burnell, Frodesley, Pitchford, Ruckley and Langley Parish Plan as identified community needs and priorities:

- Retain school
- Housing needs assessment needed to ascertain housing need
- More speed restrictions
- Footpath and cycle path installations for safety
- Winter gritting improvements
- Parking restrictions in Acton Burnell
- Improve maintenance of footpaths and bridleways and seek footpath access to Acton Burnell estate
- Better promotion locally of services and support regarding health and older people
- Improve communication through; continuing parish magazine, up to date website with better contact facilities.
- Support campaign to improve broadband speed
- Consider provision of a play area
- Improve transport to Shrewsbury
- Investigate provision or visit of mobile shops / fish and chip van
- Increase social opportunities for older residents
- Investigate development of a directory of local service
- Improve information about local bus service
- Encourage responsible behaviour from dog owners re fouling and barking
- Investigate large waste collection service and cardboard collection.
- Increase number of mobile library stops
- Compulsory speed limit of 20mph in Frodesley
- Development of a pub
- Mobile health clinics
- Improved water supply in Frodesley

Leebotwood Parish Plan (2005) and the updated action plan (May 2009)

The following have been taken from the Leebotwood Parish Plan as identified community needs and priorities:

- Roadside verges
- Footpath signage limited or in a poor state of repair and some bridges/stiles on footpaths in need of repair
- Maintenance of bridleways
- Improvements to A49 and by-ways within the Parish
- Need for pavement on the west side of the A49
- Maintenance of pavements
- Speeding
- Lack of facilities for cyclists
- Modernisation of the village hall
- Play area for junior parishioners

Leebotwood and Longnor Parish Plan Action List (update October 2010)

The following have been identified as ongoing actions from the Parish Plan Action List:

- Longnor Village Hall to be refurbished, including resurfacing of the car park
- School speed limit signage in Longnor
- Speeding traffic- conduct speed survey
- Tourist information point

Rushbury Parish Plan (2012)

The following have been taken from the Rushbury Parish Plan as identified community needs and priorities:

- To remain as countryside
- Infrastructure problems to be solved before or simultaneously with the building of new properties
- Any new building to be on previously developed land not on greenfield sites
- No commercial scale wind turbines or biomass energy production plants in the parish
- No electricity transmission lines on pylons passing through the parish
- Access to value for money fast and reliable broadband services to facilitate home working
- Encouragement for small business
- Promotion of tourism
- Increased services to allow the frail elderly to live independently in their own homes
- Support for Ring and Ride services
- Support for voluntary services such as the Mayfair Centre
- Protection of AONB and recognition of its importance as a local and national amenity and as a valuable economic resource
- Encouragement for agriculture and local food production
- More train services stopping at Church Stretton
- Better integration of public transport services
- More frequent bus services
- Better facilities at Church Stretton station
- Better maintenance of local roads
- Extension of speed limits to Wall Bank and Rushbury
- Further safety measures on B4371 at Wall Bank and East Wall
- Better facilities for pedestrians
- Enforcement of speed limits in the parish
- Reduction of litter by more frequent litter picking on the main roads and more care by refuse and recycling contractors
- Prevention of noise and other nuisances caused by patrons of licensed premises and the Village Hall

Acton Scott

No Parish Plan currently exists.

All Stretton, Woolstaston and Smethcote

No Parish Plan currently exists.

Cardington

No Parish Plan currently exists.

Eaton under Heywood and Hope Bowdler Parish Council

The Parish Council completed their plan in 2013 and a summary of their priorities are as follows:

- Improved road clearance and gritting in the winter
- Decrease speed of traffic and encourage enforcement working with local police
- Improve condition of main roads and lanes
- Undertake a housing needs survey to identify true extent of need for local affordable housing

- Aim to reduce carbon footprint of the parish
- Enhance and support existing provision of events and activities in local community buildings
- Promote mobile library service
- Improve engagement with local police.
- Encourage residents to sign up to neighbourhood watch updates by email
- Parish Council to promote crime reduction messages through parish magazines.

Local Joint Committee

Church Stretton, All Stretton, Eaton Under Heywood, Acton Scott, Leebotwood and Longnor, Cardington and Rushbury are located within the Stretton Dale Local Joint Committee Area. The following needs and priorities have been raised by the local community as part of Stretton Dale Local Joint Committee meetings:

- Police and community safety
- Streetscene and litter
- Flooding
- Highways
- Broadband
- Local food

Acton Burnell is located within the Burnell and Severn Valley Local Joint Committee Area. The following needs and priorities have been raised by the local community as part of these Local Joint Committee meetings:

- Road Safety, speeding, HGVs
- Rural transport, parking, Parkright
- Police and Community Safety
- Housing needs
- Streetscene, litter
- Waste

Other Community Consultations

Local Development Framework Core Strategy- Issues and Options Consultation (January-March 2009)

Church Stretton Town Council representations on the Core Strategy

(Representation reference no 'CORE STRATEGY/09RSUB/002345/0001/003)

- very limited available land not on the flood plain in the valley floor;
- poor and/or outmoded infra-structure water/waste drainage, power and IT communication breakdowns, insufficient access off A49, overloaded health and social care systems (with care staff unable to afford to live locally)
- lagging designation of employment land (see previous submissions to SSDC LDF consultation on employment land options between the railway line and the A49);
- town centre needing re-design for ageing population and increasing visitor numbers to regenerate and keep the local economy viable;
- under-developed visitor infra-structure, especially interconnected transport, as the only town in the Shropshire Hills Area of Outstanding Natural Beauty;
- much-needed upgrading of recreation facilities only just beginning but significant access issues remaining.

Local Development Framework Core Strategy- Issues and Options Consultation (January-March 2009)

Eaton under Heywood and Hope Bowdler Parish Council representations on the Core Strategy (Representation reference no CORESTRATEGY002365/00001/001)

- Agriculture and the livelihood of farmers must be supported and preserved.

Local Development Framework Core Strategy- Policy Directions Consultation (August-October 2009)

Church Stretton Town Council representations on the Core Strategy

(Representation reference no'CORESTRATEGY/09RSUB/002345/00002/002)

- improving the ICT/Broadband infra-structure to attract high-tech small businesses into rural areas

Local Development Framework Core Strategy- Policy Directions Consultation (August-October 2009)

Leebotwood and Longnor Parish Council representations on the Core Strategy

(Representation reference no CORESTRATEGY002390/00001/007)

- Bus services should be extended to provide a better late evening service in rural areas.

Rushbury Parish Council representations on the Core Strategy (Representation reference no CORESTRATEGY002428/00002/001)

- Current infrastructure is under severe pressure
- More emphasis on the role of the AONB as a tourist facility
- More local biodigester facilities
- Maximise energy production from waste

Local Development Framework Core Strategy – Final Plan Publication (February- March 2010)

Church Stretton Town Council representations on the Core Strategy

(Representation reference no'CORESTRATEGY/09RSUB/002345/00004/004)

- More higher education provision in the county
- Key worker housing policy in retirement areas such as Church Stretton
- Invest in tourism and transport infrastructure.
- Considerably more land will need to be released for employment
- Investment in live/work units
- Additional access points east and west off the A49 to the north of the town.
- failure to upgrade fragile Victorian pipe work will require level of investment not generated by housing developments alone. The same applies to the road infrastructure in key locations.

Local Development Framework Site Allocations and Management of Development DPD (SAMDev) – Issues and Options Consultation (April- June 2010)

Church Stretton Town Council representations on the SAMDev

(Representation reference no SAMDEV DPD/04IOP/001494/00001)

- Improvements to the drainage and sewage system
- Improvements to the health and social care facilities
- Affordable housing
- Any even modest expansion will need significant road investment in an additional east and west access off the A49
- Job creation especially for you young people
- Investment in employment land is commensurate with the scale of housing development
- Improved broadband provision
- Retention of open land between the three settlements of Church Stretton, All Stretton and Little Stretton
- Recognition that Church Stretton is the only town in the AONB Partnership area

Local Development Framework Site Allocations and Management of Development DPD (SAMDev) – Issues and Options Consultation (April- June 2010)

Acton Burnell, Frodesley and Pitchford Parish Council representations on the SAMDev

(Representation reference no SAMDEV DPD/04IOP/002302/00001)

- Limited development will require limited local infrastructure
- Development is only wanted if it is allowed within a 'countryside' designation

Rushbury Parish Council representations on the SAMDev

- Inadequate foul drainage systems for current development, particular problems exist at Rushbury and Wall where the existing systems are inadequate for the current load.
- No further development should be allowed until these problems are solved and sufficient capacity is provided for any new development.
- After such work has taken place, some small scale appropriately designed market housing development would be supported should a suitable brownfield site(s) become available.

Cardington representations on SAMDev

(Representation reference no SAMDEV DPD/04IOP/002336/00001)

- Support for single plot exception sites and small scale exceptions sites for housing associations – affordable homes for local people

Leebotwood and Longnor Parish Council- representations on SAMDev

(Representation reference no SAMDEV DPD/04IOP/002390/00002)

- More frequent bus service
- Speed restrictions
- Pavements through village and road widening
- Refurbishment to village hall
- Bus Shelter
- Improved telephone and broadband supply
- Mains gas
- Shop/Post office/Pub
- Clinic
- Mains sewage to support further housing

Investing in Shropshire's Future- Local Infrastructure and Investment Workshop with Church Stretton Town Council (20th September 2010)

- Currently, there is only one access route into the town which is quite congested
- Second access route would release more land for development
- Doctors' appointments can only be arranged a week in advance and social care facilities are inadequate for the population
- Problems with continuity of electricity supply
- Town needs to be able to accommodate climate change infrastructure
- Surface water flooding occurs in periods of high rainfall and sewers back up in several places
- Water pressures and mains water supply are an issue
- Although on a railway line, many trains do not stop. Increase the number of trains that stop.
- Increased transport for the elderly
- More affordable housing required

Church Stretton Community Toolkit Event – 7th December 2010

The following activities, facilities, services and infrastructure were considered to be the most important community assets by the event attendees:

Activities:

- Children and family activities
- Sports activities
- Youth groups and clubs

Facilities:

- Youth groups and clubs
- Places of worship
- Parking

Services:

- Shops
- Learning and training opportunities
- Healthcare

Infrastructure:

- Broadband speed and connectivity
- Housing opportunities
- Walking and cycling networks

The following points were raised by members of the community as ideas for projects to revitalise the town:

Transport:

- Better transport flow through town
- Free parking for council tax payers
- Places around the town to park bikes
- Pedestrianisation and including wider pavement in High Street (three votes of support)
- Better disabled access to shops etc (two votes of support)

Shops and services:

- Bigger and better market (two votes of support)
- More central public toilets for visitors and elderly residents
- New public conveniences
- A local post sorting office

Leisure facilities:

- An indoor space for youths to go in the evening (two votes of support)
- Provide a large container for young people to decorate and turn into a disco/social space *see Hereford Park
- And something other than pubs for people in their 20s and 30s

Development

- Additional access off the A49 for housing and employment land
- Intermediate housing (two votes of support)
- Employment land (two votes of support)
- More local employment options

Environment and waste:

- Opportunities to deposit waste locally (three votes of support)
- Re-institute waste food collection
- Food bank for families etc experiencing poverty
- A community-run forest garden/agro-forestry project in a field close to the town

Skills, training and employment:

- Skills audit of residents (three votes of support)
- Support for school
- A university in South Shropshire

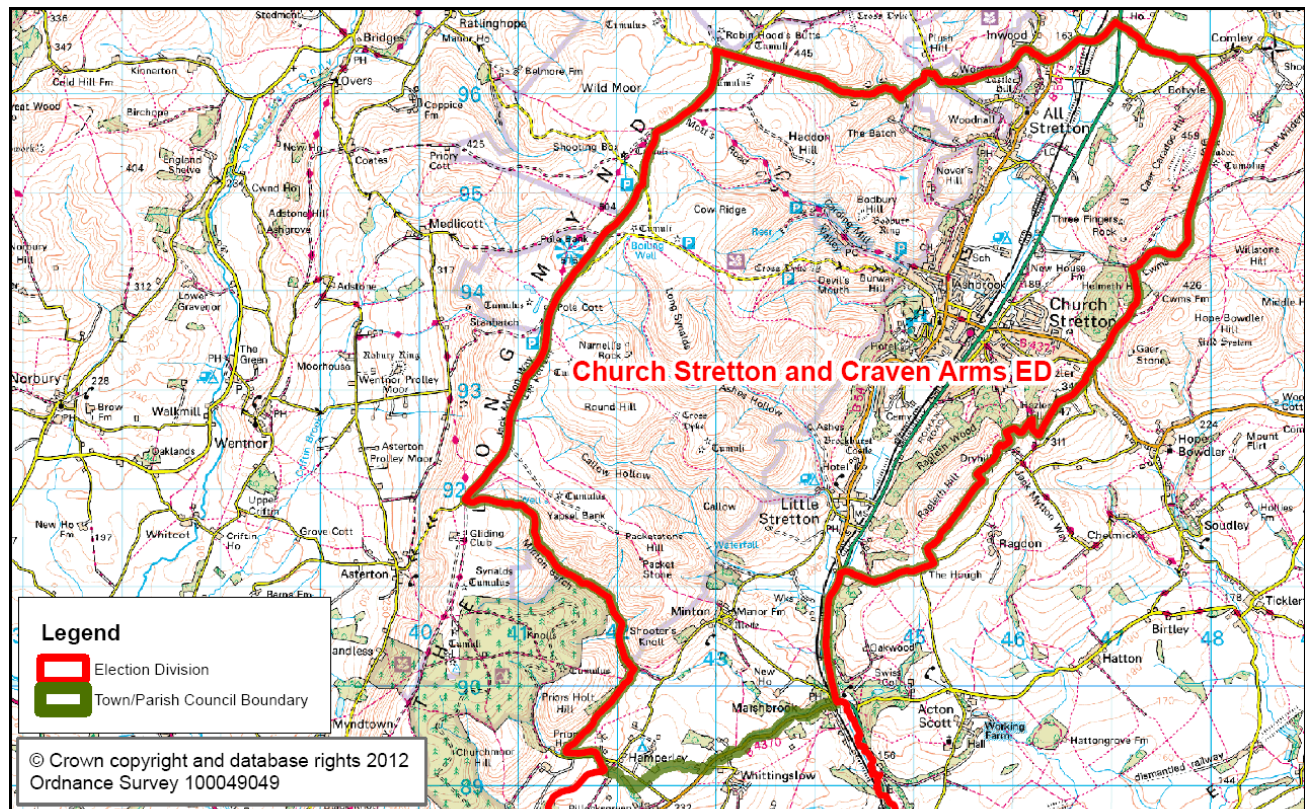
- Strengthen learning opportunities and infrastructure

Full information and feedback from the Church Stretton Toolkit event is available at:
(www.shropshire.gov.uk/factsfigures.nsf/open/C6BE79E370240015802577760045C7)

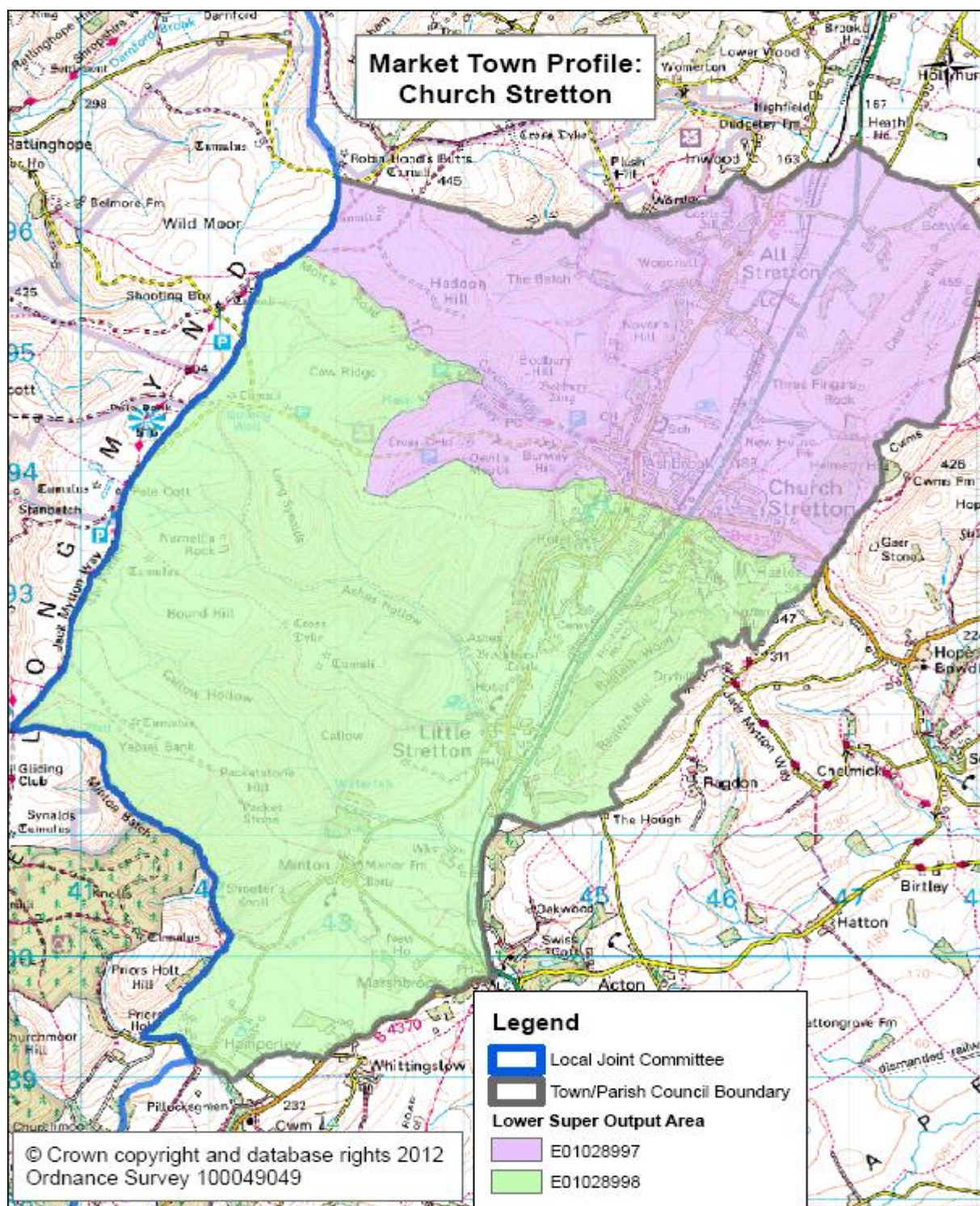


APPENDIX B: CHURCH STRETTON MARKET TOWN PROFILE

Context Map 1:



Context Map 2: Statistical Geographies



**Shropshire
Council**

Research and Intelligence Team
Strategic Planning
The Shirehall, Abbey Foregate
Shrewsbury, Shropshire, SY2 6ND
Scale: 1:54,700

Social & Demographic Characteristics

- In 2011, there were 8,157 residents in the Church Stretton Place Plan Area, an increase of 12.6% since 2001. The population of Shropshire Unitary Authority increased over the same period by 8.1%.
- Church Stretton Place Plan Area had a smaller working age population (52.8%) than the Shropshire average (59.3%). The older resident population was more significant than in Shropshire, with 27.9% of residents aged 65 and over (20.7% in Shropshire) and 4.3% aged 85 and over (2.7% in Shropshire).
- In the Place Plan Area in 2011, there were 2,425 families. 1.4% of these families (33 families) were concealed families, a slightly higher proportion than in Shropshire (1.3%). In the 2011 Census, each family in a household had a Family Reference Person, and in one family households, this person was also the Household Reference Person. However, a concealed family is one that lives with at least one other family and does not include the Household Reference Person, meaning that they will be 'concealed' in many household statistics. In the Church Stretton Place Plan Area, 12 concealed families (36.4%) had a Family Reference Person aged 25 to 34, compared to 27.8% in Shropshire. In terms of family status, 21 concealed families (63.6%) were couple families with no children, compared to 47.8% in Shropshire.
- 96.2% of residents (7,688 residents) aged 3 and over spoke English as their main language, this is a slightly lower proportion than the Shropshire average (97.9%). The most spoken languages apart from English included Polish (28), Russian (22), Cantonese Chinese (46) and all other Chinese (93). Of the 301 residents (aged 3+) who said that English was not their main language, 23 people could not speak English well and 3 people could not speak English at all.
- The 2011 Census showed that the Place Plan Area had a Black and Minority Ethnic (BME) Group population of 379 (4.6%), a larger proportion of residents than in Shropshire (2.0%). The largest broad BME group was Asian/Asian British (298 people, or 3.7%) and within this group the largest ethnic group was Chinese (234 people, or 2.9%). Within the Place Plan Area, Acton Burnell parish, the location of independent school Concord College, had an Asian/Asian British ethnic group population of 265 (48.7%) with a Chinese ethnic group population of 219 (40.3%).
- There were 21 communal establishments in the Place Plan Area. 493 people lived in the communal establishments, of which 445 were residents. Over half of people living in communal establishments were aged between 16 and 19 (278 people or 56.4%).
- Almost all 16-19 year olds living in communal establishments in the Place Plan Area lived in Acton Burnell parish.

Source: 2011 Census, Office for National Statistics, © Crown Copyright 2014.

Business

- 3,813 people (or 55.1% of the 16+ population) in the Place Plan Area were economically active, compared to 63.5% in Shropshire. More than a quarter of economically active people in employment (aged 16+) were self-employed (31.7% compared to 19.4% in Shropshire). Over half of all self-employed people were aged 50 and above (57.3%), compared to 49.7% in Shropshire.
- Nearly two-fifths of households in Church Stretton Place Plan Area had no adults in employment (1,361 households, or 39.9%).

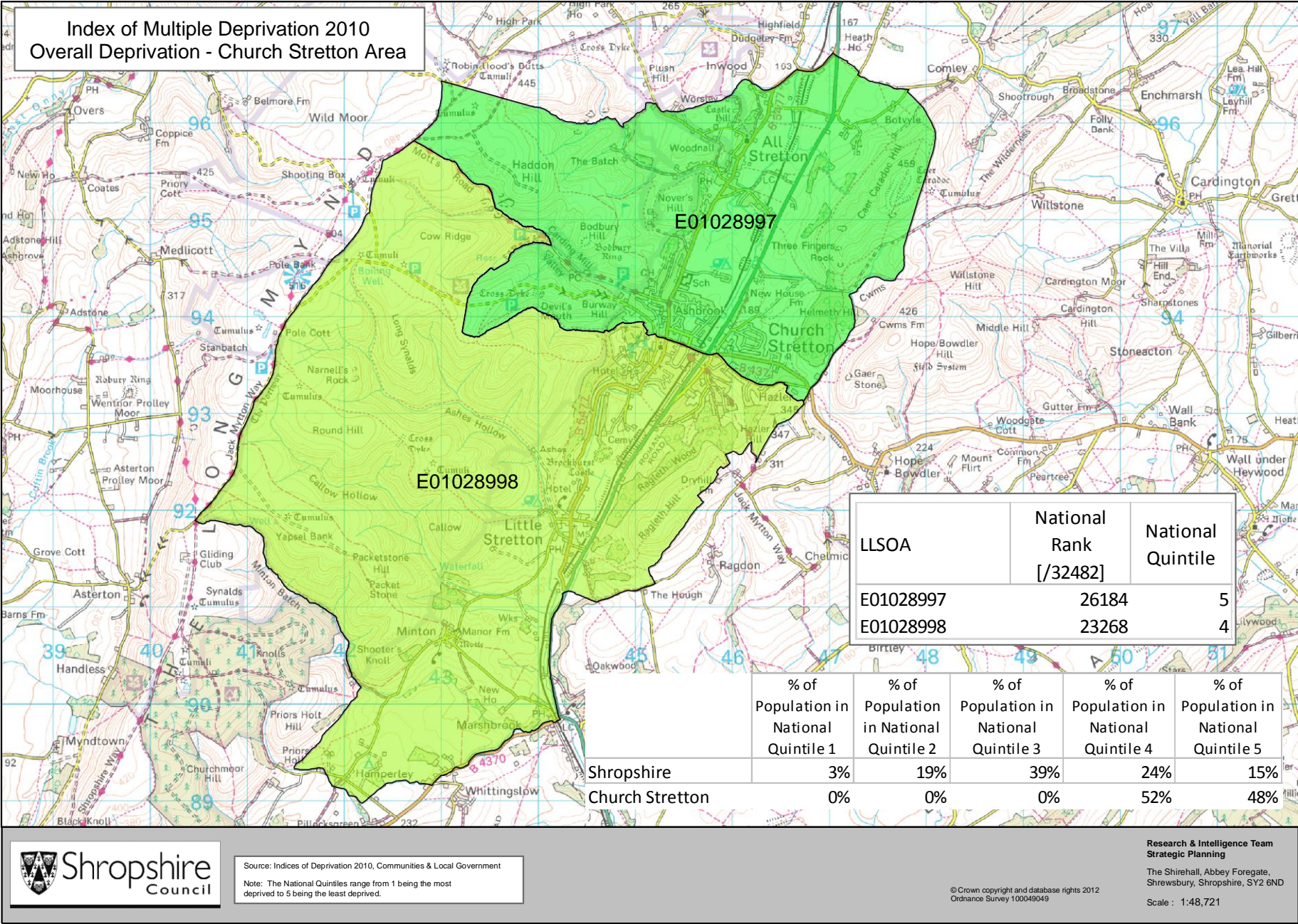
- 32.6% of all residents aged 16+ were retired compared to just over a quarter of residents in Shropshire (25.4%). A smaller proportion in the Place Plan Area were unemployed but available to work compared to Shropshire (2.3% and 3.3% respectively).
- 12.8% of all usual residents in Church Stretton Place Plan Area provided some form of unpaid care, a slightly larger proportion than the Shropshire average (11.2%). In total 202 residents in the Place Plan Area (2.5%) provided 50 or more hours of unpaid care a week, including 2 young people (0-15 years old) and 106 people of retirement age (65+).
- A considerably larger proportion of residents aged 16+ had Level 4 and above qualifications, e.g. a degree, higher degree or higher level NVQ, compared to the Shropshire average (37.4% and 27.5% respectively). Nearly a quarter of people aged 16+ (24.6%) had professional qualifications for vocations such as teaching, nursing and accountancy. A smaller proportion of residents aged 16+ had no qualifications (17.5%), compared to Shropshire (22.5%).
- Over two-fifths (44.5%) of the population (16+) in employment the week before the Census work in standard occupation classifications 1-3 (managers, directors and senior officials, professional, associate professional and technical), compared to 38.8% in Shropshire.
- More than two-fifths of people (16+) in employment the week before the Census travelled 10km or more to work (42.3%), compared with 35.1% in Shropshire.

Source: 2011 Census, Office for National Statistics, © Crown Copyright 2014.

- There are approximately 270 businesses in Church Stretton, and while most are small, there are some significant employers
- Varian is the largest, accommodating around 130 people.
- Other sizeable employers include:
 - The Longmynd Hotel
 - The White House Nursing Home
 - Mayfair Community Centre

Source: Mint, 2012

Deprivation



Housing and Households

- In 2011, there were 3,676 dwellings, of which 3,411 were household spaces with at least one usual resident. The remaining 265 household spaces had no usual residents. At 7.2%, this was a higher proportion than the Shropshire average (4.4%).
- Almost three-fifths of dwellings in the Place Plan Area were detached properties; at 57.9%, this was a considerably higher proportion than in Shropshire (39.5%).
- The average household size in the Place Plan Area was 2.2 people per household, a slightly lower average than in Shropshire (2.3). Whilst the Place Plan Area had a smaller average household size, there were a higher average number of bedrooms per household (3.1) than the Shropshire average (2.9).
- Although there were slightly fewer one person households in Church Stretton Place Plan Area (28.3%) than in Shropshire (28.9%), a larger proportion of total households were one person aged 65+ (586 households or 17.2% compared to 13.9% in Shropshire).
- 41.9% of all Household Reference Persons (a person selected to represent a whole household in statistics) were aged 65 and over, a significantly higher proportion than in Shropshire (31.6%). Household Reference Persons aged 65 and over made up 60.6% of one person households (compared to 48.2% in Shropshire) and 49.3% of households with two or more people but no dependent children (compared to 39.0% in Shropshire).

Source: 2011 Census, Office for National Statistics, © Crown Copyright 2014

Development Trends

Number of dwellings completed

	2008-2009	2009-2010	2010-2011	2011-2012	2012-2013	Total
Church Stretton	6	9	7	12	22	56

Outstanding permissions and allocations for dwellings at April 2013

	Permissions	Allocations	Total
Church Stretton	39	0	39

Retail Development: amount of floorspace (sqm) completed*

	2008-2009	2009-2010	2010-2011	2011-2012	2012-2013	Total
Church Stretton	0	53	163	91	0	307

*Includes: Classes A1 (shops); A2 (financial and professional services); A3 (restaurants and cafes); A4 (drinking establishments); A5 (hot food takeaways)

Outstanding retail floorspace (sqm) as at April 2013

	Floorspace (sqm)
Church Stretton	221

Source: Shropshire Council, Development Trends Report: 2008-2013, Shropshire Council 2013.

Transport & Infrastructure

- A lower proportion of households (13.7%) were without a car or a van compared with the Shropshire average (15.8%). Households were more likely to have multiple forms of personal transport; 47.1% of households owned 2 or more cars or vans, compared with 42.0% in Shropshire.

- Due in part to almost two-fifths of the working age population (16-74) being not in employment (38.4%), around two-fifths of 16 to 74 year olds travelled to work either as drivers or passengers in a car or van (39.5%), compared with almost half in Shropshire (47.5%).
- 10.1% of people aged 16 to 74 worked mainly at or from home, compared with 5.6% in Shropshire.

Source: 2011 Census, Office for National Statistics, © Crown Copyright 2014.

- Between 2012-13, there were 125,604 entries and exits to Church Stretton Railway Station, making it one of the most frequently used stations in the Local Authority area

Source: Estimates of Station Usage 2012-13, collated by Steer Davies Gleave on behalf of the Office of Rail Regulation, © Copyright 2014.

Natural and Historic Environment

- A large part of the Place Plan Area is covered by the Shropshire Hills Area of Outstanding Natural Beauty.
- There are several conservation areas in the Place Plan area, including Acton Burnell, All Stretton, Cardington, Church Stretton, Little Stretton, Minton and Rushbury. There are also a number of Listed Buildings, Scheduled Monuments and Registered Parks.
- Within Shropshire Unitary Authority are a number of sites that have been identified and included on the English Heritage 'Heritage at Risk Register' (<http://www.englishheritage.org.uk/caring/heritage-at-risk/>). Within Church Stretton Place Plan Area, sites that have been identified include: a Motte Castle (Scheduled Monument) in Church Stretton parish, Pitchford Hall (Grade I Listed Building) in Pitchford parish and Acton Burnell Park and Garden (Grade II) that falls within the parishes of Acton Burnell, Cound and Ruckley and Langley.
- The Jack Mytton Way and the Shropshire Way, long distance walking routes, pass through the area (<http://www.shropshirewalking.co.uk/>).
- Several cycle routes pass through Church Stretton and the Shropshire Hills (<http://www.travelshropshire.co.uk/cycle/cycle-routes/market-town-cycle-rides.aspx>).
- The Betchcott Hills ride is a route in the Picklescott area that is suitable for horseriding (<http://www.shropshireriding.co.uk/downloads/R9Betchcott.pdf>). Other routes that pass through the Place Plan Area include the Ratlinghope Ride and the Minton Ride (<http://www.shropshireriding.co.uk/>).
- Acton Scott Historic Working Farm is a museum of traditional farming methods funded and managed by Shropshire Council (<http://www.shropshire.gov.uk/actonscott/about-acton-scott-historic-working-farm/>).

Source: GIS Layers, © Copyright 2014.

Further information about Church Stretton available online:

- Shropshire Council Facts and Figures: www.shropshire.gov.uk/facts-and-figures/
- UK National Statistics: www.ons.gov.uk/ons/index.html or www.statistics.gov.uk/hub/index.html
- Nomis Profiles (Labour Market statistics): www.nomisweb.co.uk/